 Search with Ctrl-F (PC) or Command-F (Mac) to quickly find what you're looking for.

CAPELLA[®]

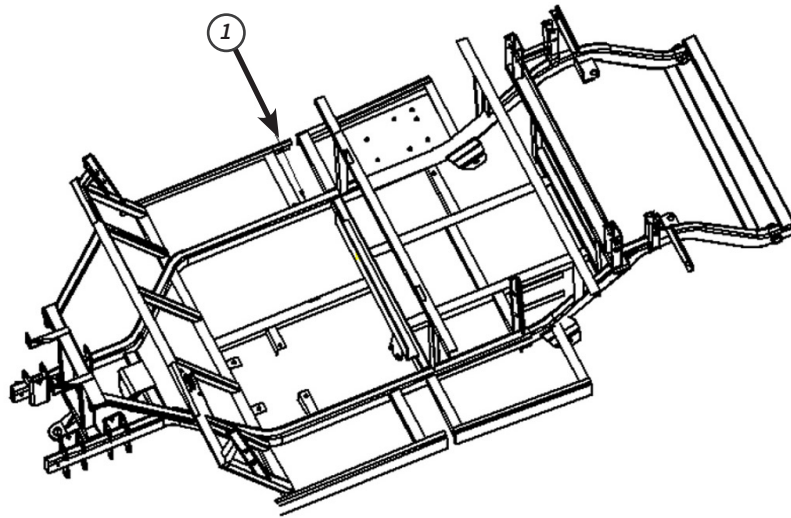
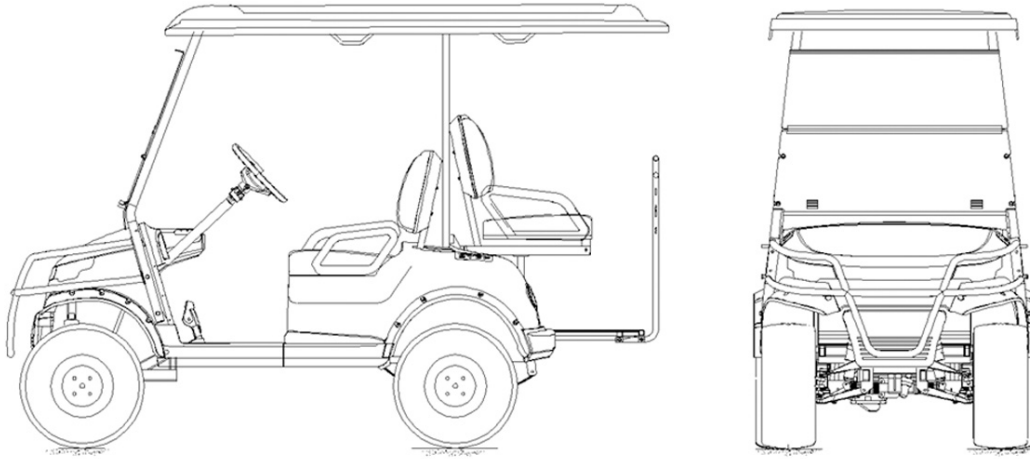
2+2 LIFTED



Contents

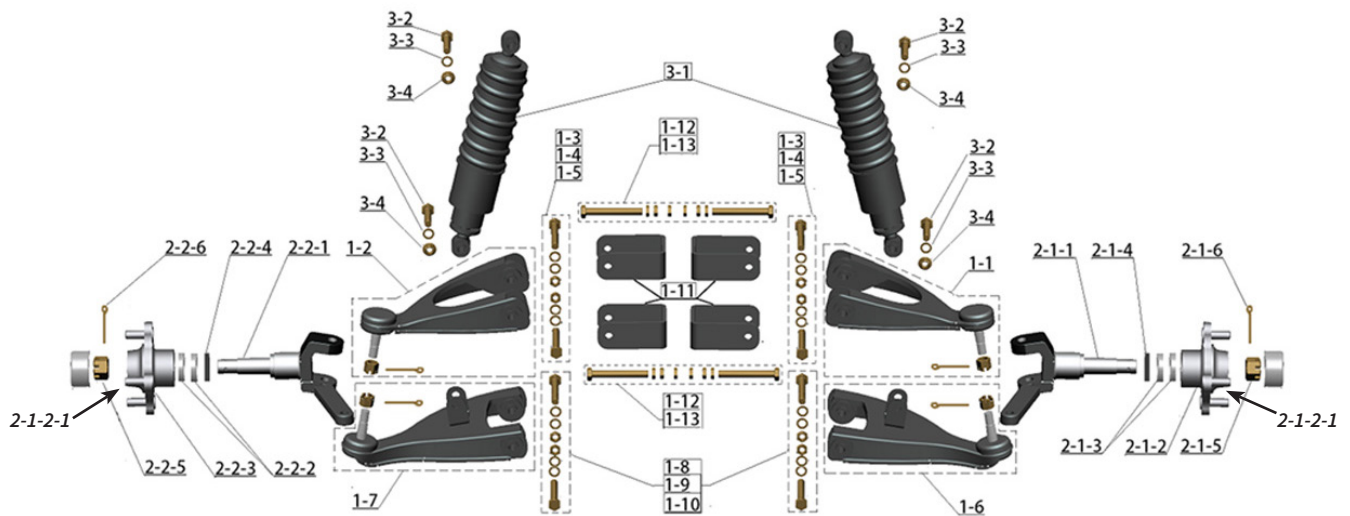
1	Chassis (CAPELLA 2+2 Lifted)	3
2	Front Suspension	4-5
3	Rear Suspension	6
4	Steering System	7
5	Brake System	8
6	Tire and Installation Assembly	9
7	Front Body / Dashboard Assembly	10-12
8	Roof Installation Assembly	13-14
9	Seats and Installation Parts	15-16
10	Seat Belt Assembly	17
11	Flip Seat Assembly	18-19
12	Front Bumper Mounting	20
13	Fender Flares and Installation Assembly	21
14	Battery Installation	22
15	Battery Controller Motor Harness	23, 24
16	Controller and Installing Accessories	25
17	Lighting Parts	26
18	10" Display Assembly	27

1 Chassis



Item No.	STAR EV Part No.	Description	MPN	Qty
1		Chassis	2207400270020	1

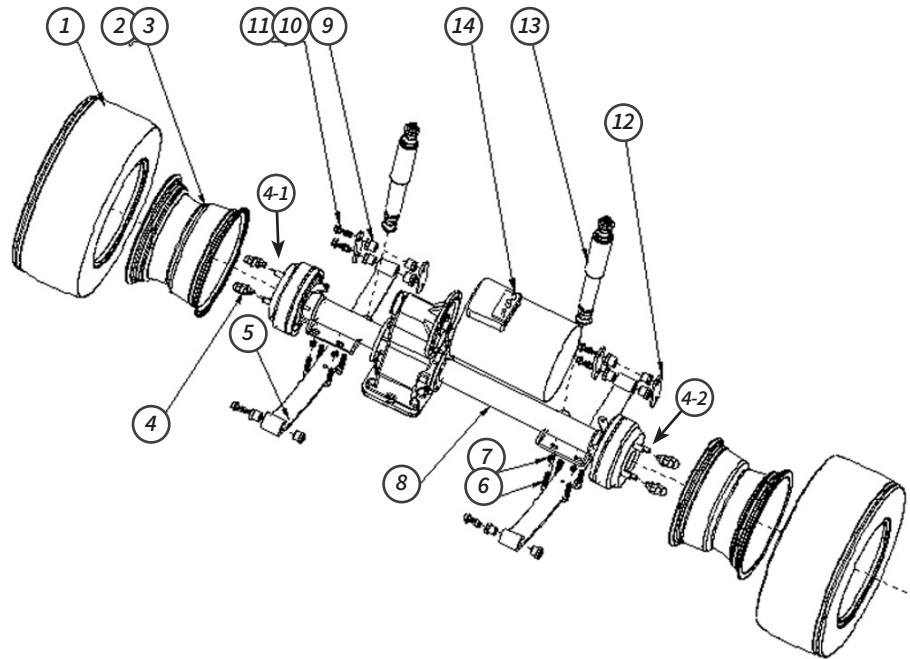
2 Front Suspension



Item No.	STAR EV Part No.	Description	MPN	Qty
1		Swing arm and installation accessories	2905401003000	1
1-1	2SC711	Upper control arm (Passenger side)	3102012032	1
1-2	2SC710	Upper control arm (Driver side)	3102012033	1
1-3		Outer hexagon bolt GB/T5782, m10*90	2200102202000	4
1-4		Flat washer GB/T97.1, M10 (20*10.5*2)	2500600013000	8
1-5		All metal insert lock nut GB/T6184, M10	2200450004000	4
1-6	2SC713	Lower control arm (Passenger side)	3102013870	1
1-7	2SC712	Lower control arm (Driver side)	3102013874	1
1-8		Outer hexagon bolt GB/T5782, M10*80	2200102102000	4
1-9		Flat washer GB/T97.1, M10 (20*10.5*2)	2500600013000	8
1-10		All metal insert lock nut GB/T6184, M10	2200450004000	4
1-11	2SC830	Camber adjustment bending	2207301154020	4
1-12		Outer hexagon bolt GB/T5783, M10*70	2200102257000	4
1-13		Hexagon nut GB/T6170, M10	2200400146000	12
2		Spindle assembly and installation accessories	2201802014000	1
2-1		Spindle assembly passenger side	2207203309000	1
2-2-1	2SP755	Driver Side Lifted Spindle ONLY	2205400032A00	1
2-1-1	2SP756	Passenger Side Lifted Spindle ONLY	2205400033A00	1
2-1-2	2HU700	Wheel Hub	2205100155A10	1
2-1-2-1	2LN052	Front Silver Stud for HUB for CAPELLA	2200103136000	4
2-1-3	2BE001	Tapered roller bearings 44643 hub bearing	2201200019000	2
2-1-4	2OL702	20 x 52 x 10 oil seal	2301300002000	1
2-1-5	2SP901	M24 x 1.5 Slotted castle nut for spindle	2200403009000	1
2-1-6	2HD201	Clevis pin 4 x 35	2200900011000	1
2-2		Spindle assembly driver side	3101061197	1
2-2-2	2HU700	Hub	2205100155A10	1

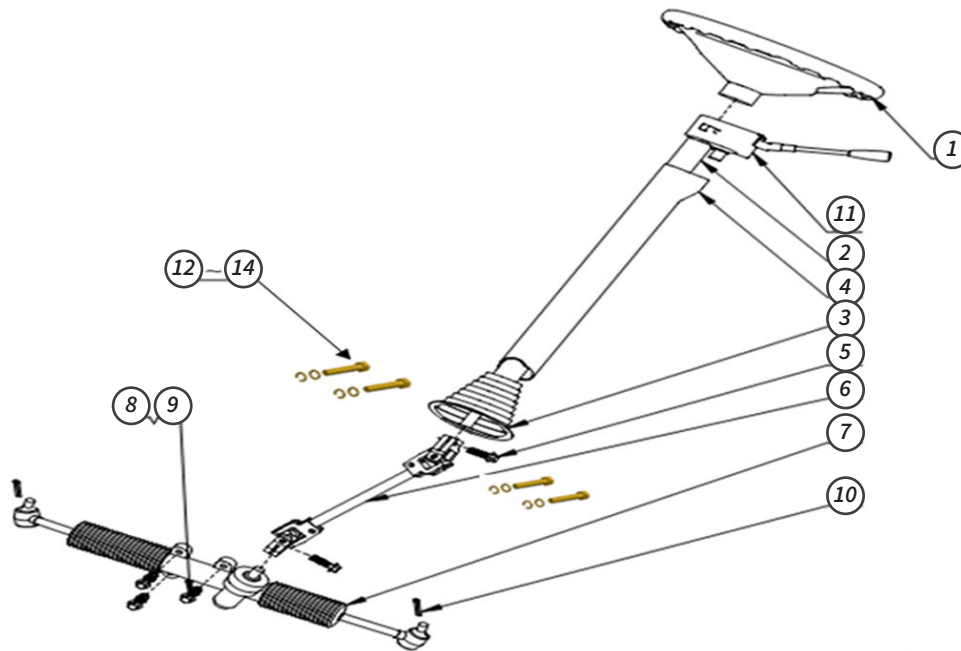
2-1-2-1	2LN052	Front Silver Stud for HUB for CAPELLA	2200103136000	4
2-2-3	2BE001	Tapered roller bearings 44643 hub bearing	2201200019000	2
2-2-4	2OL702	20 x 52 x 10 Oil Seal	2301300002000	1
2-2-5	2SP901	M24 x 1.5 Slotted castle nut for Spindle	2200403009000	1
2-2-6	2HD201	Clevis Pin 4 x 35	2200900011000	1
3		Shock absorbers and mounting accessories	2905403019000	2
3-1	2SC755	Front shock absorber assembly	2205300064000	2
3-2		Hex bolts GB/T5783, M10*50	2200102099000	4
3-3		Flat Washer GB/T97.1, M10 (20*10.5*2)	2500600013000	8
3-4	3HD161	M10 Spring washer	2200701087000	4

3 Rear Suspension



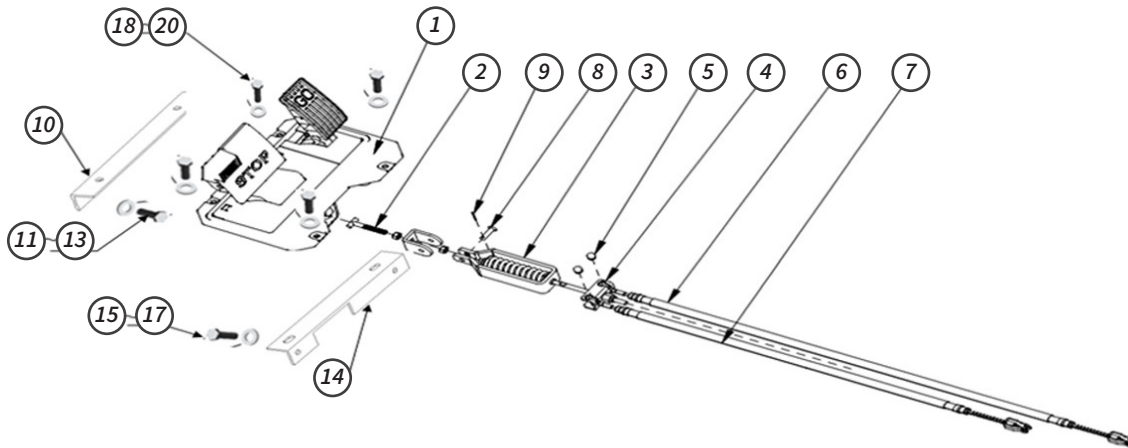
Item No.	STAR EV Part No.	Description	MPN	Qty
1	2TR516	Tire only - at 22* 10-10, 4ptl	2301400010000	2
2	2RM908	Default steel rim 10 x 8	2205100099000	2
3		Valve	2205900005000	2
4	2LN015	Lug nut	2200406043000	8
4-1	2LN053	Rear Axle Stud (Gold) 8SD906105 for CAPELLA	2200600022000	8
4-2	2LN055	Rear Axle Stud for CAPELLA M12*1.25 (HUB BOLT)	2200103139000	8
5	2LF012	Rear leaf spring assembly (Baked black paint)	2204010062A00	2
6	2LF007	U-bolt	2200104004C00	4
7	3HD142	All metal hex flange face lock nuts GB/T6187.1, M10*1.5	2200404004000	8
8	2RE801	Rear axle assembly	2903800068C00	1
9	2BS750	Steel plate rubber sleeve	2301900004C00	12
10	2LF016	Rib bolts	2200103003010	6
11		All metal hex flange face lock nuts GB/T6187.1, M10*1.5	2200404060000	6
12	2LF021	Connecting plate	2207301263000	4
13	2SK850	Rear shock	2205300031000	2
14	2MO701	Ac 32v4kw motor	2101903035000	1

4 Steering System



Item No.	STAR EV Part No.	Description	MPN	Qty
1	2SL035	Steering wheel assembly	2207700001C00	1
2	2ST157	Steering column assembly	2205600001C00	1
3	2ST041	Rubber boot	2301900031000	1
4	2ST158	Plastic cover	2301900032000	1
5		Hex bot GB/T5783 M8*25	2200100076000	2
6	2ST285	Lower Steering shaft - (Universal Joint)	2206000033A00	1
7	2ST515	Steering machine assembly	2207800034A20	1
8		Hex bolts GB/T5783, M10*55	2200102201000	3
9		All Metal Hex Flange Face Lock Nuts GB/T6187.1, M10*1.5	2200404060000	3
10	2HD212	Cotter Pin 3 x 40	2200900010000	2
11	2SW390	Combination Switch	2101400026000	1
11-1		Cross Recessed Flat Head Screws GB/T973 M6*20 A2-70	2200305003000	2
11-2		M6 Flat Washers	2200700088000	2
12		Hex bolts GB/T5783, M10*40	2200102098000	4
13		Flat Washer GB/T97.1, M10(20*10.5*2)	2500600013000	8
14		All metal insert lock nut GB/T6184, M10	2200450004000	4

5 Brake System



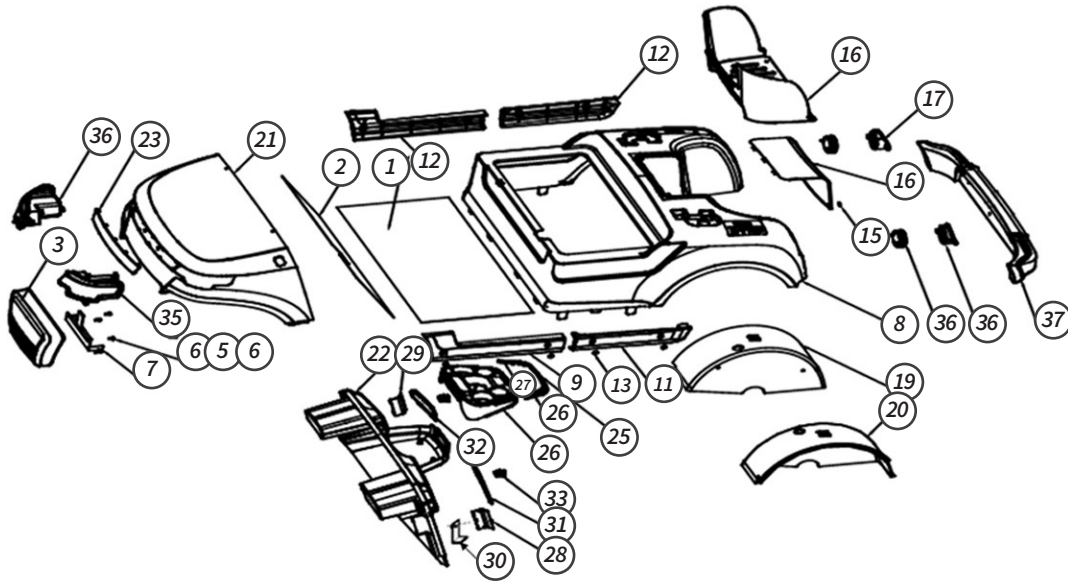
Item No.	STAR EV Part No.	Description	MPN	Qty
1	2PD700	Brake pedal assembly	2206200273000	1
2	2PB701	Pull rod for parking brake	2204800079A00	1
3	2PB700	Compensator	2206100126000	1
4	2BM700	Balance piece	2208605001C00	1
5	2BM705	Rubber plug. $\phi 12 * \phi 11 * \phi 10 * 14.2$,	2301906013C00	2
6	2CB701	Brake cable Passenger side (Long)	2206900117000	1
7	2CB700	Brake cable Driver side (Short)	2206900118000	1
8	2HD200	Clevis Pin 8 x 20	2200902002000	2
9	2HD213	Cotter Pin 2.5 x 16	2200900005000	2
10	2PD810	Brake pedal mounting plate front	2207301987010	1
11		Hex bolts GB/T5783, M8*45	2200102199000	2
12	3HD869	M8 Flat washer: GB/T97.1, M8 (16*8.4*1.6)	2500600012000	4
13		All metal insert lock nut GB/T6184, M8	2200450003000	2
14	2PD814	Brake pedal mounting plate	2207301986000	1
15		Hexagon head bolts: GB/T5783, M8*20	2200102128000	2
16	3HD869	M8 Flat washer: GB/T97.1, M8 (16*8.4*1.6)	2500600012000	4
17		All metal insert lock nut GB/T6184, M8	2200450003000	2
18		Hexagon socket head screws GB/T70.2, M8*25	2200413062000	4
19	3HD869	M8 Flat washer: GB/T97.1, M8(16*8.4*1.6)	2500600012000	4
20		All metal insert lock nut GB/T6184, M8	2200450003000	4

6 Tires and Installaion Assembly



Item No.	STAR EV Part No.	Description	MPN	Qty
1	2CC130	Center cap	2209000002000	4
2	2TR516	Tire only - AT22*10-10, 4PTL	2301400010000	4
3		Rim optional components	2905476001000	1
3-1	2RM908	Default STEEL Rim 10 x 8	2205100099000	4
3-2	2RM918	Upgrade Aluminum Rim 10 x 8	2200016661000	4
4		Valve	2205900005000	4
5	2LN015	Lug nut	2200406043000	16

7 Front Body / Dashboard Assembly

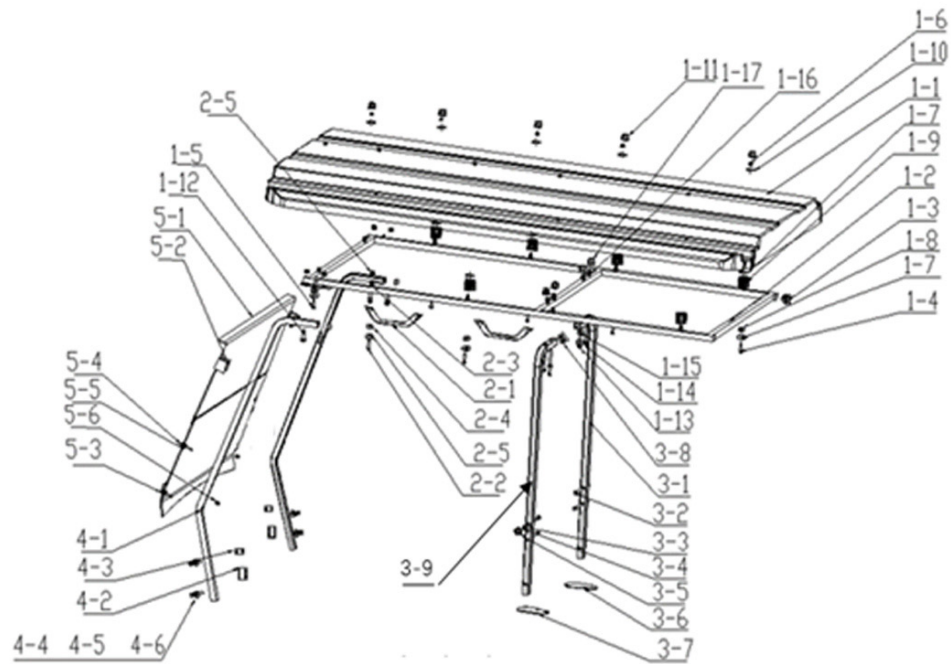


Item No.	STAR EV Part No.	Description	MPN	Qty
1	2BD800	Bottom floor (FIREWALL) 495*1100	2207301171030	1
2	2BD801	Front Iron Floor (FIREWALL) 360*980	2207301172A20	1
2-1	3HD601	M2 x 25 Cross recessed countersunk head self drilling self tapping screw GB/T15856.2 ST4.2×25	2200300068000	15
2-2	2BD715	EVA die cut flat strip	2302605041000	10
3	2BU800	Front bumper	2206400035A10	1
4		Hexagon head bolts GB/T5783, M8*20	2200102128000	3
5	3HD869	M8 Flat washer :GB/T97.1,M8(16*8.4*1.6)	2500600012000	3
6	3HD870	M8 Spring washer :GB/T93,8.1,	2200701086000	3
7	2BU803	Mounting Bracket	2208100229A00	1
7-1		Hex bolts GB/T5783, M8*45	2200102199000	2
7-2	3HD869	M8 Flat washer: GB/T97.1,M8(16*8.4*1.6)	2500600012000	2
	3HD870	M8 Spring washer: GB/T93,8.1,	2200701086000	2
8		Rear Body	2400200701000	1
8	2BY650	Rear Body - Pure White		
8	2BY651	Rear Body - Coastal Blue		
8	2BY652	Rear Body - Candy Apple Red		
8	2BY653	Rear Body - Royal Blue		
8	2BY654	Rear Body - Lime Green		
8	2BY655	Rear Body - Black		
8	2BY656	Rear Body - Forest Blue Mist		
8	2BY657	Rear Body - Sunburst Orange		
8	2BY658	Rear Body - Beige		
8	2BY659	Rear Body - Yellow		
8	2BY662	Rear Body - Metallic Silver		
9	2RP781	Rocker Panel - Driver Side Front REV 1 (BEFORE PO 212303)	2208200189A00	1

9	2RP791	Rocker Panel - Driver Side Front Rev 2 (PO 212303 & after)	2208200189A20	1
10	2RP783	Rocker Panel - Passenger Side Front Rev 1 (Before PO 212303)	2208200190A00	1
10	2RP793	Rocker Panel - Passenger Side Front Rev 2 (PO 212303 & after)	2208200190A20	1
10-1		Hexagon socket head screws GB/T70.2, M8*35	2200413063000	4
10-2	3HD869	M8 Flat washer :GB/T97.1,M8(16*8.4*1.6)	2500600012000	4
10-3	3HD870	M8 Spring washer :GB/T93,8.1,	2200701086000	4
10-4	3HD868	M8 Hexagon nut: GB/T6170,M8,	2200400145000	4
11	2RP782	Rocker Panel Driver Side Rear	2208200191A00	1
12	2RP784	Rocker Panel Passenger Side Rear- rubber	2208200192A00	1
12-1		Hexagon socket head screws GB/T70.2, M8*35	2200413063000	4
12-2	3HD869	M8 Flat washer: GB/T97.1,M8(16*8.4*1.6)	2500600012000	4
12-3	3HD870	M8 Spring washer: GB/T93,8.1,	2200701086000	4
12-4	3HD868	M8 Hexagon nut: GB/T6170,M8,	2200400145000	4
13	2RP780	Plastic Plug for Rocker Panels	2301906067000	8
14	2MO091	Maintenance cover	2207301149A10	1
15	2GB181	Glue nails	2301700001000	12
16	2GB180	Bag well Liner	2303400081A10	1
17	2LT762	Passenger rear taillight shell	2100700271000	1
18	2LT761	Driver rear taillight shell	2100700252000	1
19	2FN801	Passenger side fender well	2302305105A10	1
20	2FN800	Driver side fender well	2302305106A10	1
20-1	3HD855	M6 x 12 Hexagon headed bolt: GB/T5783 M6*12 A2-70	2200100009000	2
20-2	3HD629	M6 A200 SS Flat washer	2200700015000	2
20-3	3HD847	M6 spring washer GB/T93,6	2200701010000	2
20-4	2WS476	M6, A2-70 Hexagon lock nut with non-metallic insert stainless steel	2200401001000	2
20-5	3HD605	M2 x 25 Hexagon flange self tapping screw ST4.2*25 GB/T15856.4	2200500137000	4
21		Front Cover	2400200702000	1
21	2BO650	Front Body - Pure White		
21	2BO651	Front Body - Coastal Blue		
21	2BO652	Front Body - Candy Apple Red		
21	2BO653	Front Body - Royal Blue		
21	2BO654	Front Body - Lime Green		
21	2BO655	Front Body - Black		
21	2BO656	Front Body - Forest Blue Mist		
21	2BO657	Front Body - Sunburst Orange		
21	2BO658	Front Body - Beige		
21	2BO659	Front Body - Yellow		
21	2BO661	Front Body - Metallic Silver		
22	2DB041	Dashboard	2301600024A10	1
22-1	2HD117	Rivet 5 x15	2201000011000	10
22-2	3HD603	9 x 14mm Cross recessed pan head tapping screw: GB/T845,ST2.9*14mm	2200500093000	10

23	2B0699	Front grill	2305201001000	1
23-1		Hex nuts GB/T6170,M5, A2-70	2200400149000	6
23-2		Flat washer GB/T97.1, M5(10*5.3*1),A200	2500600016000	6
23-3		Spring Washer GB/T93,5.1, A200	2200701090000	6
24	2CP800	Cup holder on dashboard	2305101001000	1
25	2CP801	Middle - Decorative Trim for Cup holder on dashboard	2300400462A00	1
26	2CP802	Driver Side - Decorative TRIM for Cup holder on dashboard	2300400463A00	1
27	2CP803	Passenger Side-Decorative TRIM for Cup holder on dashboard	2300400464A00	1
27-1	3HD604	2 x 8mm Cross recessed pan head tapping screw: GB/T845,ST2.2*8mm	2200500078000	6
27-2	3HD603	9 x 14mm Cross recessed pan head tapping screw: GB/T845,ST2.9*14mm	2200500093000	2
27-3	2DB718	Access panel for Driver side roof support bracket	2207301155A00	1
28	2DB718	Access panel for Driver side roof support bracket	2207301155A00	1
29	2DB719	Access panel for Passenger side roof support bracket	2207301156A00	1
30	2DB721	Baffle mounting plate	2207300249A00	2
30-1	3HD854	M4 x 18mm Round head cross screw: PWM M4*18mm	1205209095A00	2
30-2	2HD117	Rivet 5 x 15	2201000011000	4
31	2GV120	Glove box door driver side	2401001512A10	1
32	2GV121	Glove box door passenger side	2401001511A10	1
33	2GV601	Storage box lid lock	2202000012000	2
34	2LT746	Headlight - Passenger Side Assembly	2100700259010	1
35	2LT745	Headlight - Driver Side Assembly	2100700258010	1
35-1		Hex bolts GB/T5783, M6*15	2200102246000	4
35-2	3HD882	M6 Large washer: GB/T96, M6 (18*6.4*1.6)	2200704005000	4
35-3	3HD891	M6 Clip Nut	2200406019000	4
35-4		Cross recessed pan head tapping screws: GB/T845 ST4.8*25, A2-70	2200500233000	2
35-5		Large Flat Washer GB/T96, M5 (15*5.3*1, A200)	2301908145000	2
36	2LT760	Taillight Assembly Driver or Passenger	2100700217000	2
36-1		large flat Washer GB/T96,M5 (15*5.3*1, A200)	2301908145000	4
36-2		Cross recessed pan head tapping screws GB/T845, ST4.8*20, A2-70	2200500173000	4
37	2BR850	rear bumper	2301800040A10	1
37-1		Hexagon head bolts: GB/T5783, M8*20	2200102128000	3
37-2	3HD869	M8 Flat washer: GB/T97.1, M8(16*8.4*1.6)	2500600012000	3
37-3	3HD870	M8 Spring washer: GB/T93,8.1,	2200701086000	3
38	2BY998	Access Panel for Rear Body	2300400325000	1
38-1	3HD130	M4 x 12 Cross Slot, Bolt, Pan Head	2200304197000	4
39	2BY999	Rear cover support rod	2204900170020	2
39-1		Hex bolts GB/T5783, M6*15, A2-70	2200102204000	8
39-2	3HD861	M6 washer GB/T97.1, M6 (12*6.4*1.6) A200	2500600017000	16
39-3		Non-Metallic Insert Hex Lock Nuts GB/T889.1, M6,A2-70	2200401054000	8

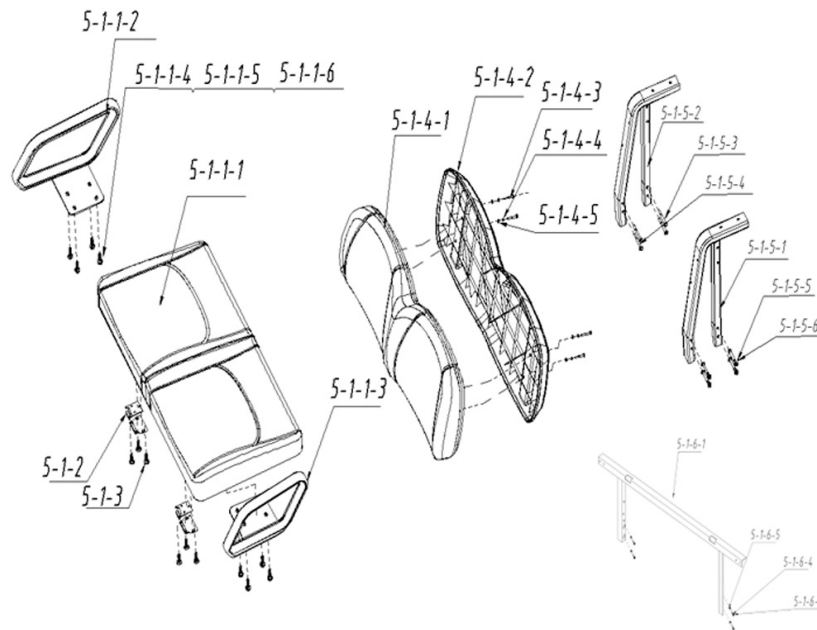
8 Roof Installation Assembly



Item No.	STAR EV Part No.	Description	MPN	Qty
1		Roof and installation assembly		1
1-1		Roof		1
	2RF709	Roof - CAPELLA-2+2 Metallic Silver	2302502010000	1
	2RF710	Roof - CAPELLA-2+2 Arctic White	2302502007000	1
	2RF711	Roof - CAPELLA-2+2 Black	2302502008000	1
	2RF712	Roof - CAPELLA-2+2 Candy Apple Red	2302502009010	1
	2RF713	Roof - CAPELLA-2+2 Forest Blue Mist	2302502011010	1
	2RF715	Roof - CAPELLA-2+2 Sunburst Orange	2302502004010	1
	2RF716	Roof - CAPELLA-2+2 Royal Blue	2302502020000	1
	2RF717	Roof - CAPELLA-2+2 Beige	2302502020000	1
	2RF718	Roof - CAPELLA-2+2 Lime Green	2302502021000	1
	2RF719	Roof - CAPELLA-2+2 Yellow	23025020220000	1
1-2	2UB230	Roof U bracket		1
1-3	2RF995	Roof rod rubber stopper		4
1-4		Hexagon socket head screws GB/T70.2 M8*110, A2-70		2
1-5		Flat head socket head cap screws GB/T70.2 M8*80 A2-70		8
1-6	3HD816	M8 A2-70 SS Lock Nut		10
1-7	3HD814	M8 A200 SS Flat Washer		20
1-8	3HD880	M8 Spring washer: GB/T93, 8.1		20
1-9	2BS751	Rubber insert, $\phi 26 * \phi 12 * 28$, with $\phi 12 * \phi 8 * 26$ zinc plated steel bushing		12

	2RF997	Rubber grommet, $\phi 40 \times \phi 11 \times 10$ mm for Roof-SIRIUS		10
1-10	2RF994	Rubber washer / grommet $\phi 16 \times \phi 9 \times 3$		10
1-11	3HW305	M8 Cap-plastic round cap nut cover (Large), M8		10
1-12	3HD871	M10 x 50 Outer hexagon bolt GB/T5783, M10*50, A2-70		4
1-13	3HD872	M10 x 70 Outer hexagon bolt GB/T5782, M10*70, A2-70		4
1-14	3HD864	M10 Washer GB/T97.1, M10(20*10.5*2), A200		8
1-15		Spring Washer GB/T93,10.2		8
1-16	3HD874	M10 Hexagon lock nut with non-metallic insert GB/T889.1, M10,A2-70		8
1-17	3HD875	M10 screw head protective cap		10
2	2RF040	Handle Assembly		3
2-1	2RF941	Handle		1
2-2	3HD876	M6 x 40 Cross recessed pan head screw GB/T818, M6*40, A2-70		2
2-3		Non-Metallic Insert Hex Lock Nuts GB/T889.1, M6,A2-70		2
2-4	3HD861	M6 Washer GB/T97.1, M6(12*6.4*1.6), A200		2
2-5	3HW306	Cap-plastic round cap nut cover (Small) M6		2
3-1	2BK262	Rear roof support (Passenger side)		1
3-2	3HD877	M8 x 80 Outer hexagon bolt GB/T5783, M8*80, A2-70		6
3-3	3HD878	M8 Flat washer GB/T97.1, M8 (16*8.4*1.6), A200		12
3-4	3HD879	M8 Hexagon lock nut with non-metallic insert GB/T889.1, M8,A2-70		6
3-5	3HW305	M8 Cap- plastic round cap nut cover (Large) M8		8
3-6	2BK911	Rubber cover for Passenger Side - REAR roof supports		1
3-7	2BK910	Rubber cover for Driver Side - REAR roof supports		1
3-8	2BK915	Plug for REAR roof supports		2
3-9	2BK291	Rear roof support (Driver side)		1
4	2BC215	Front roof support and mounting accessories		1
4-1		Front roof support		2
4-2		Spacer 1 Q235A25*5		2
4-3		Spacer 2 Q235A 25*5		2
4-4	3HD805	M8 x 55 A2-70 SS Hex bolt		8
4-5	3HD814	M8 A200 SS Flat Washer		8
4-6	3HD818	M8 Spring Washer		4
5		Flip Windshield and Mounting Accessories		1
5-1	2WS091	Windshield - Flip Tinted for CAPELLA 2P / 2+2 / 2H / 4H / HCX CAPELLA Lifted 2+2, 4+2	2400700451000	1
5-2	2WS472	Black Rubber mount $\phi 20 \times \phi 14 \times 16$, 7mm opening, includes $\phi 10 \times \phi 7 \times 14$ bushing for windshield		4
5-3	2WS473	Rubber cushions / bumpers for windshield		4
5-4		Cross recessed pan head screws GB/T818 M6*65 A2-70		4
5-5	3HD882	M6 Large Washer GB/T96, M6 (18*6.4*1.6)		4
5-6		Non-Metallic Insert Hex Lock Nuts: GB/T889.1M6, A2-70		4

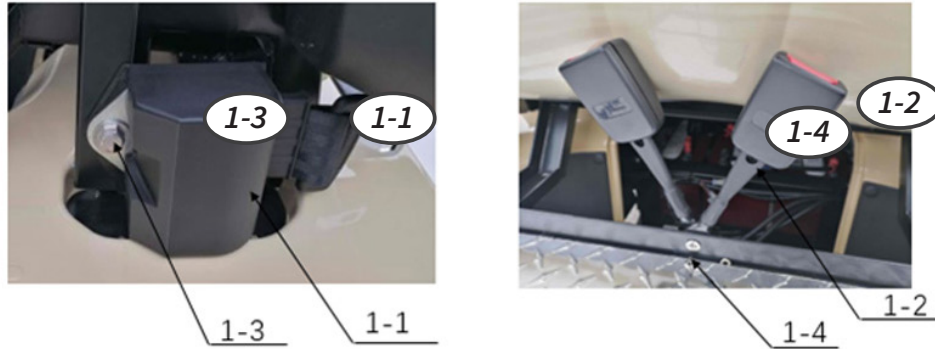
9 Seats and Installation Parts



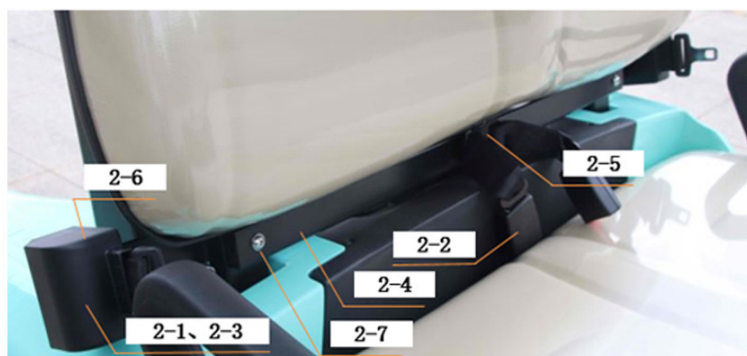
Item No.	STAR EV Part No.	Description	MPN	Qty
5-1		Front seats and mounting accessories	2903200563000	1
5-1-1		Cushion Components	2902701098000	1
5-1-1-1	2CS452	BEIGE-Bottom cushion for over batteries	2501500246020	1
	2CS452-HK	*HK ONLY* CAPELLA BEIGE- Bottom cushion for over batteries Capella, OPEN Workmachine, Capella Lifted (2023 & LATER)	3108024550	1
5-1-1-2	2CS036	Armrest Front Passenger	2202600149A00	1
5-1-1-3	2CS034	Armrest over batteries - Driver Side	2202600351000	1
5-1-1-4		Hexagon head bolts GB/T5783,M8*25	2200100467000	8
5-1-1-5	3HD869	M8 Flat washer: GB/T97.1,M8 (16*8.4*1.6)	2500600012000	8
5-1-1-6	3HD870	M8 Spring washer: GB/T93, 8.1	2200701086000	8
5-1-2	2HG040	Hinge	2202200001000	2
5-1-3		Cross recessed countersunk head bolts, GB819-85, M6*20, A2-70	2200107011000	10
5-1-4		Backrest components	2902701101000	1
5-1-4-1	2CS451	BEU Backrest Cushion	2501500250010	1
	2CS451-HK	*HK ONLY* CAPELLA, BEIGE Backrest Cushion - Front, pod & OEM Flip seat FOR Capella, OPEN Workmachine, Capella Lifted (2023 & LATER)	3407012635	1
5-1-4-2	2CS080	Backrest cover	2501506024A00	1
5-1-4-3	3HD075	M6 x 65 Hex bolt A2-70 SS	2200100023000	4
5-1-4-4	3HD629	M6 A200 SS Flat washer	2200700015000	4
5-1-4-5	3HD847	M6 Spring Washer, GB/T93,6	2200701010000	4
5-1-5	#N/A	Backrest brackets and mounting accessories	2905471004000	1
5-1-5-1	2FP904	Backrest bracket welded right	2207202023010	1
5-1-5-2	2FP903	Backrest bracket welded left	2207202024010	1

5-1-5-3		Hexagon head bolts GB/T5782 M8*75 A2-70 8.8	2200100154000	4
5-1-5-4	3HD805	M8 x 55 A2-70 SS Hex bolt	2200100013000	4
5-1-5-5	3HD814	M8 A200 SS Flat Washer	2200700021000	8
5-1-5-6	3HD818	M8 Spring Washer	2200701012000	8
5-1-6		Seat brackets and mounting accessories	2905471005000	1
5-1-6-1	2CS950	Seat bracket	2207201983020	1
5-1-6-3	3HD849	M8 20 HEX Head Bolt, GB/T5783	2200100039000	4
5-1-6-4	3HD848	M8 Flat Washers GB/T97.2 8	2200700023000	8
5-1-6-5	3HD816	M8 A2-70 SS Lock Nut	2200401003000	4

10 Seat Belt Assembly



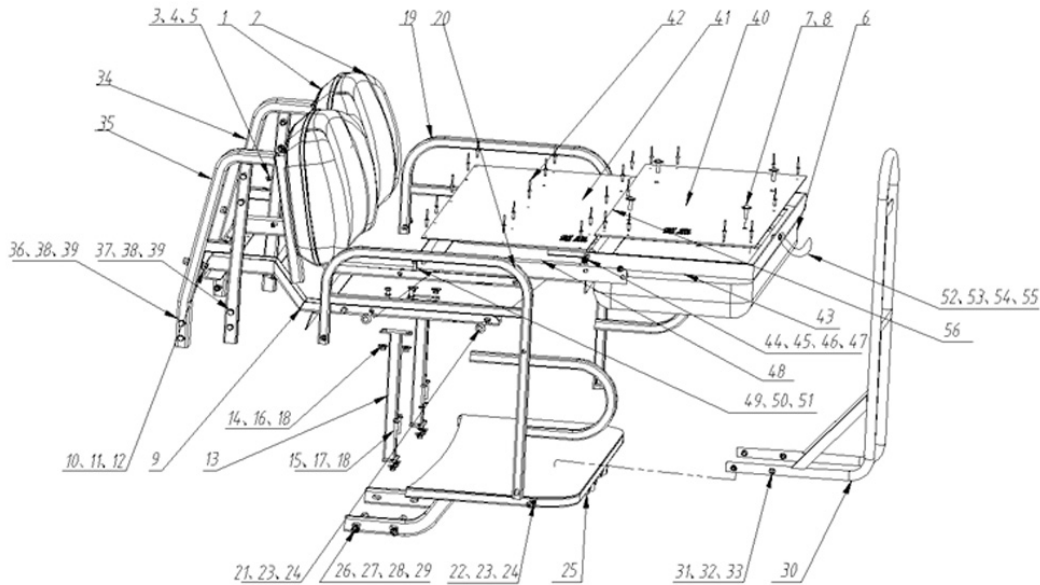
Item No.	STAR EV Part No.	Description	MPN	Qty
1-1	2SB101	Sirius two-point seat belt (without female buckle)	2501304030000	2
1-2	2SB103	Sirius two-point seat belt female buckle	2501304031000	2
1-3		Hexagon socket head screws: GB/T70.2,M8*45,A2-70	2200301021000	2
1-4	3HD810	M8 x 25 Cross recessed countersunk head screw: GB/T819.2 M8*25	2200302012000	1
1-5	3HD814	M8 A200 SS Flat Washer	2200700021000	6
1-6	3HD818	M8 Spring Washer	2200701012000	3
1-7	3HD816	M8 A2-70 SS Lock Nut	2200401003000	3



Item No.	STAR EV Part No.	Description	MPN	Qty
2-1	2SB101	Sirius two-point seat belt (without female buckle)	2501304030000	2
2-1	2SB102	Seat belt female buckle	2202001065000	2
2-3	2SB109	Seat belt fixing plate	2203014582000	2
2-4	2SB100	Seat belt installation tube	2208400552A00	1
2-5		Hexagon socket head screws GB/T70.2, M8*35 A2-70	2200301020000	1

2-6	3HD093	Hexagon socket head screws GB/T70.2, M8*25 A2-70	2200301023000	2
2-7	3HD095	Hexagon socket head screws GB/T70.2, M8*70	2200301007000	2
2-8	3HD814	M8 A200 SS Flat washer	2200700021000	10
2-9	3HD818	M8 Spring Washer	2200701012000	5
2-10	3HD816	M8 A2-70 SS Lock Nut	2200401003000	5

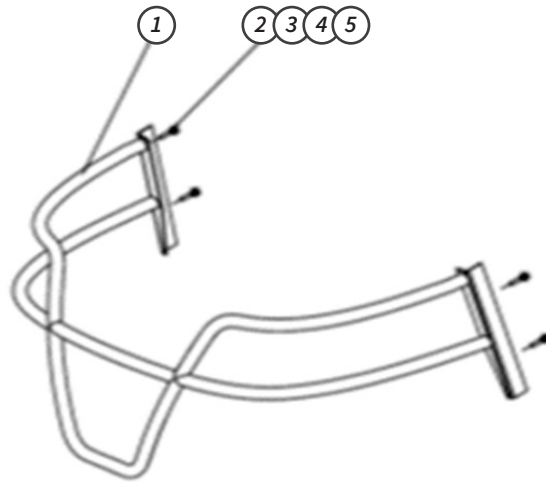
11 Flip Seat Assembly



Item No.	STAR EV Part No.	Description	MPN	Qty
1	2CS451	Beige Backrest Cushion	2501500250010	1
2	2CS080	Backrest cover	2501506024A00	1
3	3HD806	M8 x 65 A2-70 SS Hex bolt	2200102170000	4
4	3HD861	M6 washer GB/T97.1, M6 (12*6.4*1.6), A200	2500600017000	4
5	3HD862	M6 Spring washer GB/T93,6.1	2200701091000	4
6	2CS454	CAPELLA-Flip Bottom BEIGE Cushion (OEM)	2501500258010	1
	2CS454-HK	*HK ONLY* Capella-Flip Bottom BEIGE Cushion (OEM) (2023 & LATER)	3108024607	1
7		Hexagon socket head screws GB/T 70.2, M8*30, A2-70	2200301234000	4
8	3HD863	M8 LARGE WASHER GB/T96,M8 (24*8.4*2, A200)	2200704006000	4
9	2FP910	Support frame for CAPELLA OEM Flip Seat	2207201876A20	1
9-1		Rear seat bracket	2207201877A20	1
10	3HD871	M10 x 50 Outer hexagon bolt GB/T5783, M10*50, A2-70	2200102107000	2
11	3HD864	M10 WASHER GB/T97.1, M10 (20*10.5*2) A200	2500600019000	4
12	3HD874	M10 Hexagon lock nut with non-metallic insert GB/T889.1, M10, A2-70	2200401053000	2
13	2FP909	Seat support column	2208300192A00	2
14	3HD883	M8 x 25 Outer hexagon bolt GB/T5783,M8*25, A2-70	2200102184000	4
15	3HD802	M8 x 45 Outer hexagon bolt GB/T5783,M8*45, A2-70	2200102168000	4
16	3HD878	M8 Flat washer GB/T97.1, M8 (16*8.4*1.6), A200	2500600018000	8
17	3HD863	M8 Large Washer GB/T96, M8 (24*8.4*2, A200)	2200704006000	8

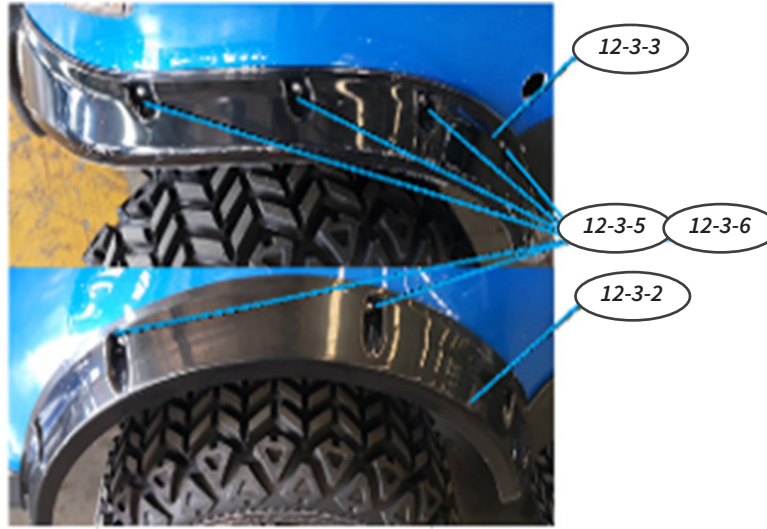
18	3HD879	M8 Hexagon lock nut with non-metallic insert GB/T889.1, M8,A2-70	2200401052000	8
19	2FP915	Flip seat armrest left	2202600310000	1
20	2FP916	Flip seat armrest right	2202600312000	1
21	3HD884	M8 x 40 Hexagon socket flat round head screw: GB/T 70.2, M8*40, A2-70	2200301235000	4
22		Hexagon socket head screws GB/T 70.2, M8*65, A2-70	2200413039000	2
23	3HD878	M8 Flat washer GB/T97.1, M8 (16*8.4*1.6), A200	2500600018000	12
24	3HD879	Non-Metallic Insert Hexagon Head Lock Nuts	2200401052000	6
25	2FP907	Foot board	2206200254A20	1
26		Hex bolts GB/T5782, M10*70	2200102101000	4
27		Hexagon nut GB/T6170, M10	2200400146000	4
28		Flat Washer GB/T97.1, M10 (20*10.5*2)	2500600013000	8
29	3HD161	M10 Spring Washer	2200701087000	4
30	2FP908	Grab Handle	2206200299000	1
31	3HD802	M8 x 45 Outer hexagon bolt GB/T5783, M8*45, A2-70	2200102168000	4
32	3HD878	M8 Flat Washer GB/T97.1, M8 (16*8.4*1.6), A200	2500600018000	8
33	3HD879	M8 Hexagon lock nut with non-metallic insert GB/T889.1, M8,A2-70	2200401052000	4
34	2FP904	Backrest bracket weldment passenger side	2207202023010	1
35	2FP903	Backrest bracket weldment driver side	2207202024010	1
36	3HD886	M8 x 70 Outer hexagon bolt GB/T5783, M8*70, A2-70	2200102206000	4
37		GB/T5783, M8*55, A2-70	2200102169000	4
38	3HD878	M8 Flat washer GB/T97.1, M8 (16*8.4*1.6), A200	2500600018000	16
39	3HD879	M8 Hexagon lock nut with non-metallic insert GB/T889.1, M8,A2-70	2200401052000	8
40	2FP911	Flip board - Plate	2200016091010	1
41		Reverse bottom plate	2200016092010	1
42	3HD117	Rivet 5 x 15 GB/T12618 5*15 A2-70	2201000010000	30
43		Flip seat frame	2200016089020	1
44	2FP914	Rotating shaft sleeve	2200016490A00	2
45		Hexagon socket head screws GB/T 70.2,M8*30,A2-70	2200301234000	2
46	3HD878	M8 Flat Washer GB/T97.1, M8 (16*8.4*1.6), A200	2500600018000	4
47	3HD879	M8 Hexagon lock nut with non-metallic insert GB/T889.1, M8,A2-70	2200401052000	2
48		Reverse Mounting Bracket	2200016090030	1
49	3HD886	M8 x 70 Outer hexagon bolt GB/T5783, M8*70, A2-70	2200102206000	4
50	3HD878	M8 Flat Washer GB/T97.1, M8(16*8.4*1.6), A200	2500600018000	8
51	3HD879	M8 Hexagon lock nut with non-metallic insert GB/T889.1, M8,A2-70	2200401052000	4
52	2FP917	Woven belt L*W (400*40mm)	2501306018000	1
53		Cross recessed pan head screws	2200305026000	1
54	3HD882	M6 Large washer: GB/T9, M6 (18*6.4*1.6)	2200704005000	1
55		Non-Metallic Insert Hex Lock Nuts GB/T889.1, M6,A2-70	2200401054000	1
56	2DC902	Decorative strips	2302605033000	2

12 Front Bumper Mounting



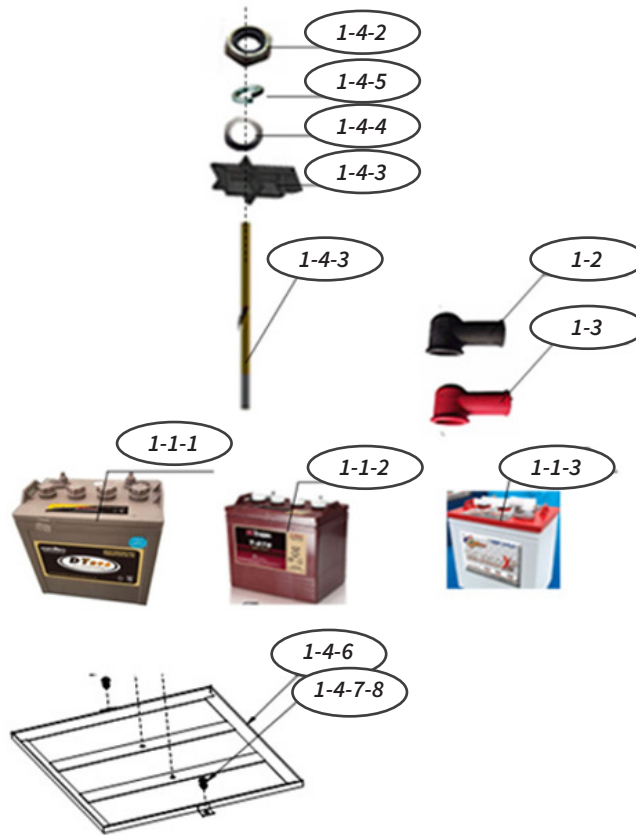
Item No.	STAR EV Part No.	Description	MPN	Qty
1	2BG800	Front bumper weldment	2206400033030	1
2		Hex bolts: GB/T5783, M10*50	2200102099000	4
3		All Metal Hex Flange Face Lock Nuts GB T6187.1,M10*1.25	2200404061000	4
4	3HD161	M10 Spring washer	2200701087000	4
5		Flat Washer GB/T97.1 ,M10(20*10.5*2)	2500600013000	4

13 Fender Flares and Installation Assembly



Item No.	STAR EV Part No.	Description	MPN	Qty
12-3-1	2FN805	Fender flare rear driver side	2302900006A00	1
12-3-2	2FN806	Fender flare rear passenger side	2302900007A00	1
12-3-3	2FN850	Fender flare front driver side	2302900008A00	1
12-3-4	2FN851	Fender flare front passenger side	2302900009A00	1
12-3-5		Cross recessed pan head tapping screws GB/T845, ST4.8*25, A2-70	2200500233000	24
12-3-6		Flat Washer GB/T97.1, M5(10*5.3*1), A200	2500600016000	24
13			2900900525000	1

14 Battery Installation



Item No.	STAR EV Part No.	Description	MPN	Qty
1		Battery unit and mounting accessories	2905466080000	1
1-1		Battery	2100101377000	1
1-1-1		DT896E	2100101050000	6
1-1-2		Outsourced Battery	2100101017000	6
1-1-3		Outsourced Battery	2100101018000	6
1-2	2BT402	Terminal Cap Black	2301902002000	12
1-3	2BT404	Terminal cap Red	2301902001000	12
1-4		Battery Mounting Accessories	2904200065000	1
4-1	2BT045	Battery tightening screw	2200200002B00	2
4-2	3HD832	Hex nuts	2200400012000	6
4-3	2BT036	battery pressure plate	2207300286B10	2
4-4	3HD848	M8 Flat Washers: GB/T97.2 8	2200700023000	6
4-5	3HD819	M8 Spring Washer: GB/T93,8	2200701011000	2
4-6		8V Battery Holder	2203900049A20	1
4-7	3HD091	M8 x 25 Bolt, Hex Head	2200100029000	2
4-8	3HD814	M8 A200 SS Flat Washer	2200700021000	2
4-9	3HD816	M8 A2-70 SS Lock Nut	2200401003000	2

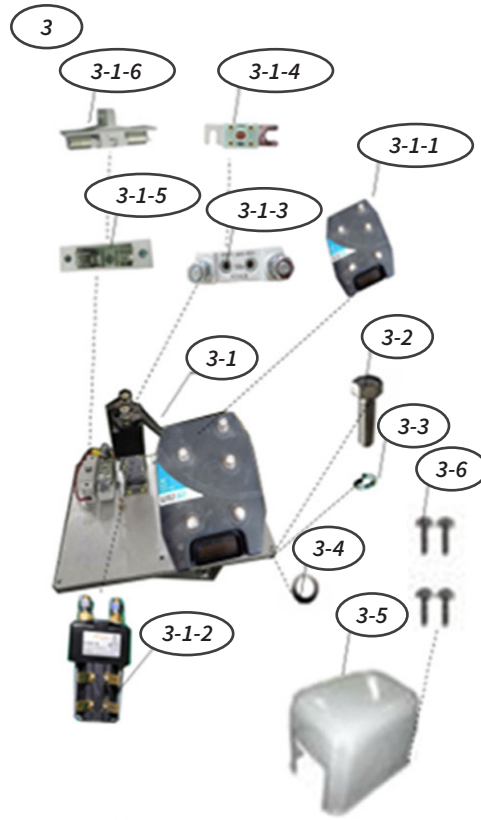
15 Battery Controller Motor Harness



Item No.	STAR EV Part No.	Description	MPN	Qty
1		DT896E	2100101050000	6
2	2BT402	Terminal cap BLACK	2301902002000	6
3	2BT404	Terminal cap RED	2301902001000	6
4	2MO701	AC 32V4KW motor	2101903035000	1
5	3HD808	M6 x 25 Hex bolts DIN933,M6*25	2200100257000	3
6	3HD847	M6 Spring Washer GB/T93,6	2200701010000	3
7	3HD614	M6 Flat Washers	2200700088000	3
8		Controller Assembly	2901500107000	1
9	3HD816	M8 A2-70 SS Lock Nut	2200401003000	4
10	3HD814	M8 A200 SS Flat washer	2200700021000	4
11	2CN908	COVER- for controller	2300800012B00	1
12	3HD888	M5 x 15 Cross recessed pan head screw GB818-85 M5*15	1205211014000	4
13	2SW430	Gear switch	2101400208000	1
14	2SW152	Backup beeper / buzzer with terminal wires	2902400002C00	1
14-1		Buzzer	2101602010000	1
14-2		Pin terminal	1205505010000	2
14-3		Terminal housing	1306413001000	1
15	2MT119	Battery indicator, 906D48BNBA0	2102801003000	1
16	2SW291	Universal Ignition switch with keys	2101500048000	1
17	2SW146	Headlight switch	2101400036000	1

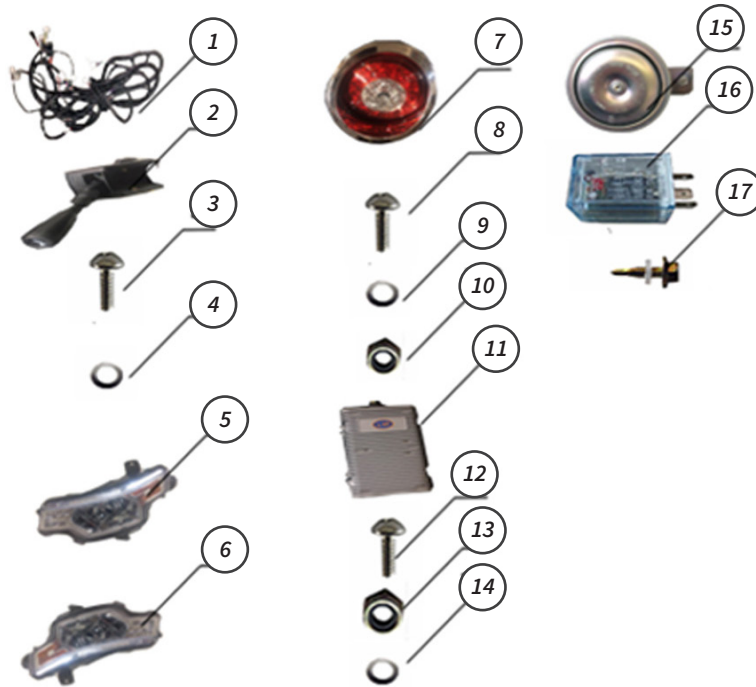
18	2SW170	Hazard Alarm Switch	2101400035000	1
19		Charging socket	2100600051000	1
20	3HD887	Cross Recessed Flat Head Screws GB/T973 M6*20 A2-70	2200305003000	4
21	3HD614	M6 Flat Washers	2200700088000	4
22	2WS476	M6, A2-70 Hexagon lock nut with non-metallic insert stainless steel	2200401001000	4
23		Battery cable	2100400036C00	1
24		Controller positive and negative power lines	2901701198A00	1
25	2BT154	Motor connection line	2901706137A10	1
26	2WH954	Power control circuit harness	2901705485020	1
27		Data line	2100400001B00	1
28		Charger	2101100011000	1
29		Charging plug	2100601019000	1
30		Charger input cable	2100401022000	1
30-1		Charger input cable	2100401010000	1
30-2		Charger input cable	2100401011000	1
30-3		Charger input cable	2100401008000	1
30-4		Charger input cable	2100401009000	1
31	2DC807	Instrument switch fixing plate	2207302001000	1
31-1		Cross recessed pan head tapping screws GB/T845 ST2.9*16, A2-70	2200500198000	4

16 Controller and Installing Accessories



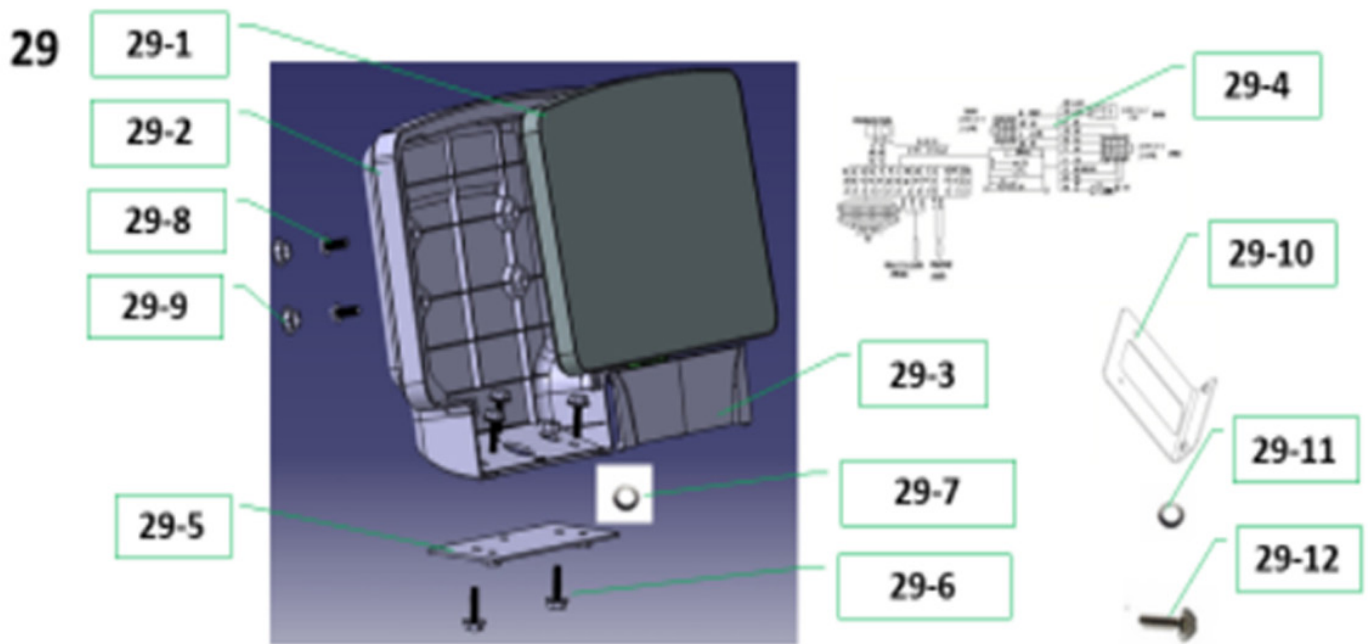
Item No.	STAR EV Part No.	Description	MPN	Qty
3		Controllers and installing accessories	2905467003000	1
3-1		Controller assembly	2901500107000	1
3-1-1	2CN700	48V 350A AC Programmable Controller	2101701024000	1
3-1-2	2SO480	Main Contactor: ZJW200A/48V	2102300047A00	1
3-1-3	2FU174	Fuse Holder RQD-148V800A	1131550107000	1
3-1-4	2FU190	Chip Insurance CNN-300A DC48V	1128100120000	1
3-1-5	2FU121	Fuse holder RT14-20	2303400009000	1
3-1-6	2FU150	Control fuse RT14-20/10A	2102601003000	1
3-2	3HD858	M8 x 16 Hexagon headed bolt : GB/T5783 M8*16	2200100089000	4
3-3		Spring Washer LGB/T93,8mm	1205002014000	4
3-4	3HD848	M8 Flat Washers GB/T97.2 8	2200700023000	1
3-5	2CN916	Protecting mask	2304401700C10	1
3-6	3HD888	M5 x 15 Cross recessed pan head screw GB818-85 M5*15	1205211014000	4

17 Lighting Parts



Item No.	STAR EV Part No.	Description	MPN	Qty
1	2WH978	Lighting harness	2901704135A00	1
2	2SW390	Combination Switch	2101400026000	1
3		Cross Recessed Flat Head Screws GB/T973, M6*20, A2-70	2200305026000	2
4	3HD861	M6 washer GB/T97.1, M6 (12*6.4*1.6), A200	2500600017000	2
5	2LT746	Headlight - Passenger Side Assembly	2100700259010	1
6	2LT745	Headlight - Driver Side Assembly	2100700258010	1
7	2LT760	Taillight Assembly Driver or Passenger	2100700217000	2
8		Cross recessed pan head screws GB/T823 M4*20	2200304006000	4
9		Flat Washers GB/T96,4	2200700006000	4
10		Non-Metallic Insert Hex Lock Nuts GB/T889.1 M4 A2-70	2200401014000	4
11	2CV155	DC converter	2101800038000	1
12	3HD888	M5 x 15 Cross recessed pan head screw GB818-85 M5*15	1205211014000	4
13	3HD890	M5 Hexagon lock nut with non-metallic insert GB/T889.1 M5 A2-70	2200401002000	4
14	3HD852	M5 Flat washer GB/T97.1 5	2200700010000	4
15	2SW210	Electric horn	2101600001000	1
16	2RL060	Flasher	2101603003000	1
17	3HD895	M5*20 External hexagon rear end self drilling screw	2200307005000	1

18 10" Display Assembly



Item No.	STAR EV Part No.	Description	MPN	Qty
29	N/A	CAPELLA 10 inch display assembly DG-C2-8G,10	2103014663	1
29-1	2MT297	CAPELLA 10 inch display 48v CAN	3207015501	1
29-2	2MT299	Display cover body DG.C2.8G-17000010,S7, ABS	3401010386	1
29-3	2MT300	Display cover DG.C2.8G-17000011,S7, ABS	3401010387	1
29-4	2MT301	Connecting cable DG.C2.8G-14000010, S1	3205026662	1
29-5	2MT302	Display mounting plate DG.C2.8G-17000012, S1, GB/T708 2.0T	3304017748	1
29-6	2HD295	Coarse teeth full thread hexagon head bolt GB/T5783-M6×15	2200102246000	5
29-7	2HD296	Large Washer GB/T 96.1-6,A2	2200700017000	5
29-8	2HD297	Cross recess pan head screw GB/T 818 - M5 x 20,A2-70, 300	2200304199000	4
29-9	2MT303	Rubber mat MC12-4.0001-0700, A0, φ10*2mm, ROHS	1304202011A00	4
29-10	2MT304	Display support plate DG.C2.8G-10000110, S0, Q235 3mm	3301022504	1
29-11	2HD298	Hex socket flat round head screw GB/T70.2 M6 x 16,8.8	2200301177000	4
29-12	2HD299	Flat Washer GB/T97.1-6	2200700104000	4