 Search with Ctrl-F (PC) or Command-F (Mac) to quickly find what you're looking for.

# CAPELLA<sup>®</sup>

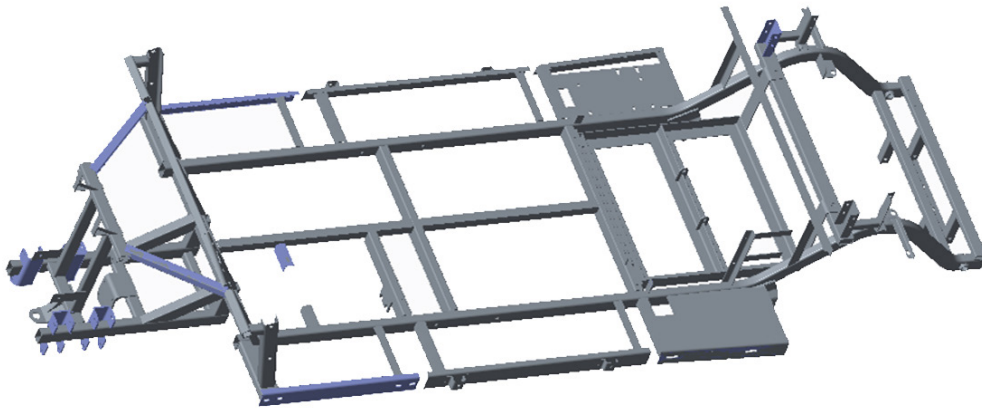
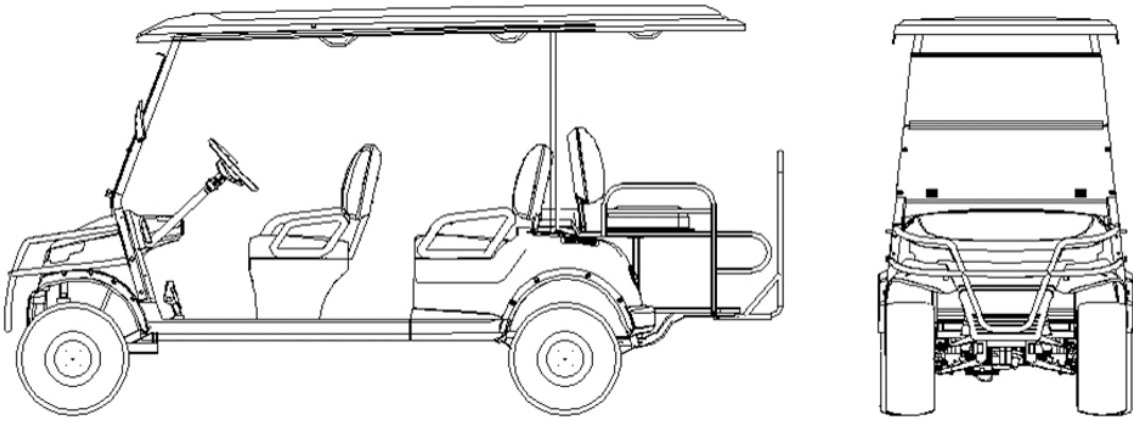
## 4+2 LIFTED



# Contents

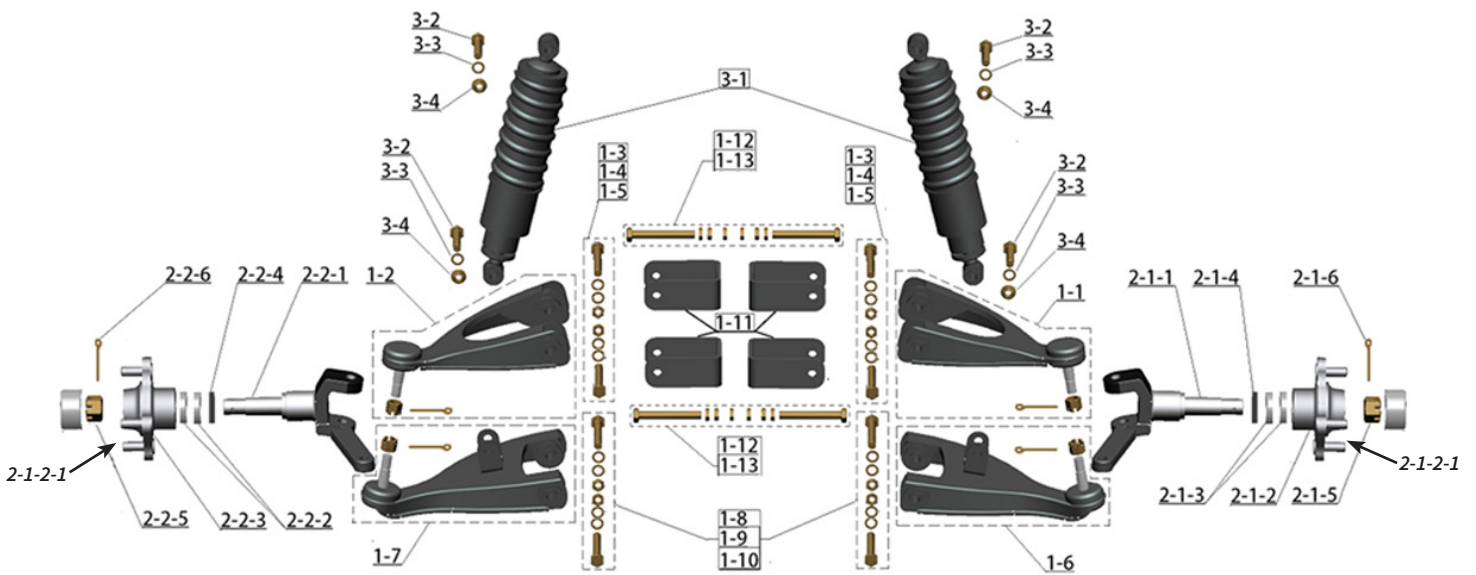
1	Chassis	3
2	Front Suspension	4-5
3	Rear Suspension	6
4	Steering System	7
5	Brake System	8
6	Body Parts	9
7	Front Guardrail Assembly	10
8	Roof Parts	11-12
9	Middle Seat	13-14
10	Rear Seat	15
11	Roof Support And Windshield Assembly	16-17
12	Body Side Guardrail Assembly	18
13	Front Body Assembly	19-20
14	Rear Body Parts	21-22
15	Flip Seat Assembly	23-24
16	Mudguard And Mounting Accessories	25
17	Fender Flare And Mounting Accessories	26
18	Tire And Installation Accessories	27
19	Front Bumper Mounting	28
20	Battery Installation Assembly	29
21	Battery Controller Motor Harness	30-31
22	Controller And Installation Assembly	32
23	Lighting Parts	33-34
24	10" Display Assembly	35

# 1 Chassis



Item No.	STAR EV Part No.	Description	MPN	Qty
1		Chassis	2207400290020	1

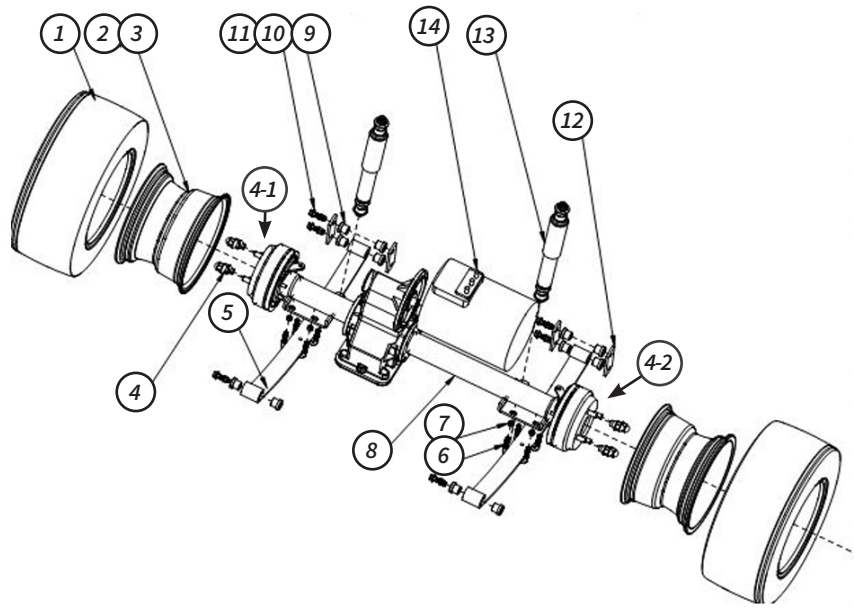
## 2 Front Suspension



Item No.	STAR EV Part No.	Description	MPN	Qty
		Front Suspension Part	2900200135000	
1		Swing arm and installation accessories	2204700134030	1
1-1	2SC711	Upper Control Arm (Passenger side)	3102012032	1
1-2	2SC710	Upper Control Arm (Driver side)	3102012033	1
1-3		Outer hexagon bolt GB/T5782, M10*90	2500600013000	4
1-4		Flat Washer GB/T97.1 ,M10(20*10.5*2)	2200450004000	8
1-5		All metal insert lock nut GB/T6184, M10	2204700091030	4
1-6	2SC713	Lower Control arm (Passenger side)	3102013870	1
1-7	2SC712	Lower Control arm (Driver side)	3102013874	1
1-8		Outer hexagon bolt GB/T5782, M10*80	2500600013000	4
1-9		Flat Washer GB/T97.1 ,M10(20*10.5*2)	2200450004000	8
1-10		All metal insert lock nut GB/T6184, M10	2207301154020	4
1-11	2SC830	Camber adjustment bending	2200102257000	4
1-12		Outer hexagon bolt GB/T5783, M10*70	2200400146000	4
1-13		Hexagon nut GB/T6170, M10	2201802014000	12
2		Spindle assembly and installation accessories	2201802087A10	1
2-1		Spindle assembly passenger side	2207203307000	1
2-1-1	2SP756	Spindle (Passenger side)	2205400033A00	1
2-1-2	2HU700	Hub	2201200019000	1
2-1-2-1	2LN052	Front Silver Stud for HUB for Capella	2200103136000	4
2-1-3	2BE001	Tapered Roller Bearings 44643 Hub Bearing	2301300002000	2
2-1-4	2OL702	20 x 52 x 10 Oil Seal	2200403009000	1
2-1-5	2SP901	M24 x 1.5 Slotted castle nut for Spindle	2200900011000	1
2-1-6	2HD201	Clevis Pin 4 x 35	2201802088A10	1
2-2		Spindle assembly driver side	2207203308000	1
2-2-1	2SP755	Spindle (Driver Side)	2205400032A00	1

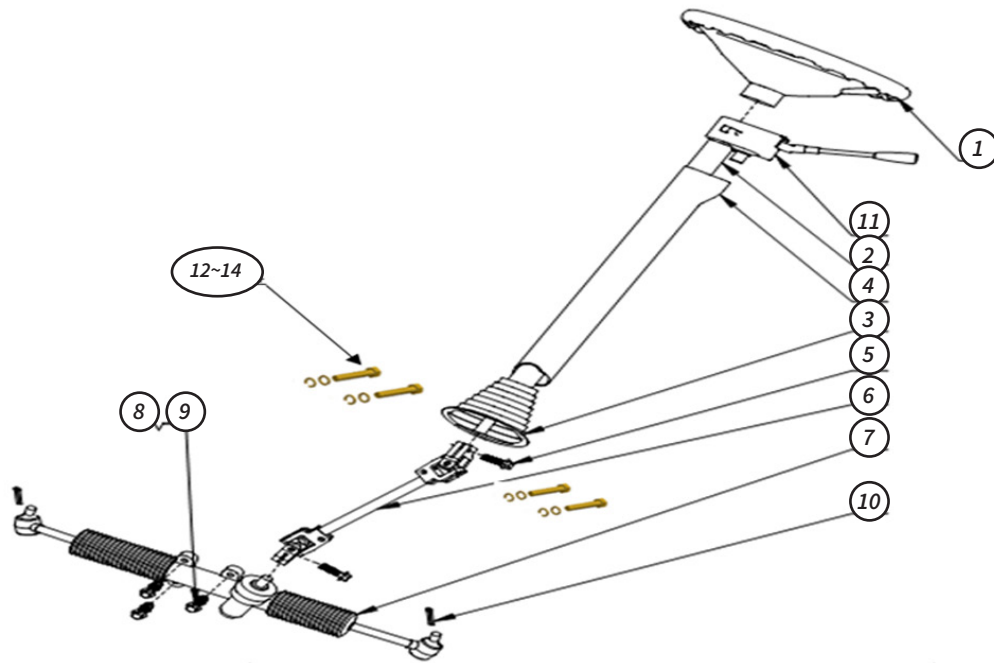
2-2-2	2HU700	Hub	2201200019000	1
2-1-2-1	2LN052	Front Silver Stud for HUB for Capella	2200103136000	4
2-2-3	2BE001	Tapered Roller Bearings 44643 Hub Bearing	2301300002000	2
2-2-4	2OL702	20 x 52 x 10 Oil Seal	2200403009000	1
2-2-5	2SP901	M24 x 1.5 Slotted castle nut for Spindle	2200900011000	1
2-2-6	2HD201	Clevis Pin 4 x 35	2905403019000	1
3		Shock absorbers and mounting accessories	2205300064000	2
3-1	2SC755	Front shock absorber assembly	2200102099000	2
3-2		Hex bolts GB/T5783, M10*50	2500600013000	4
3-3		Flat Washer GB/T97.1 ,M10(20*10.5*2)	2200701087000	8
3-4		M10 Spring washer	2200701087000	4

### 3 Rear Suspension



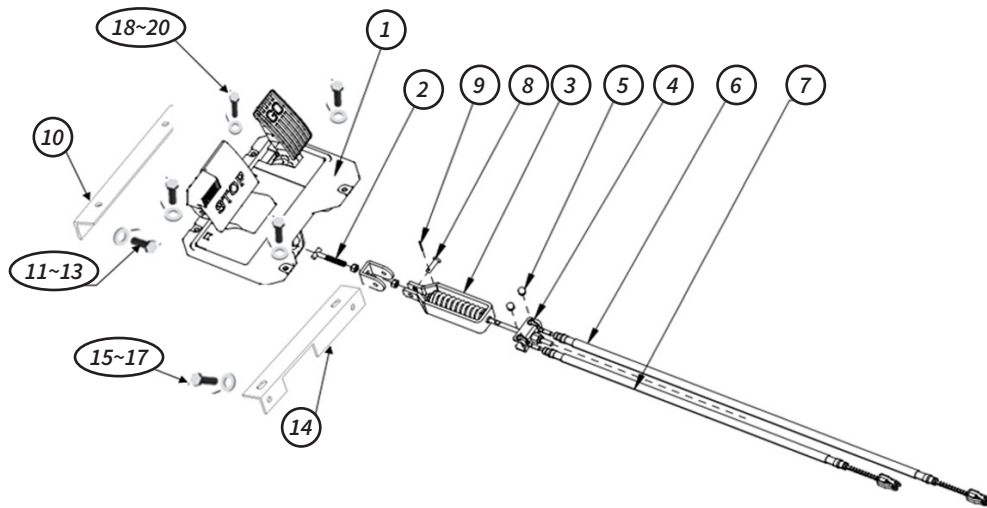
Item No.	STAR EV Part No.	Description	MPN	Qty
1	2TR516	Tire only - AT22*10-10, 4PTL	2301400010000	2
2	2RM908	Default STEEL Rim 10 x 8	2205100099000	2
3		Valve	2205900005000	2
4	2LN015	Lugnut	2200406043000	8
4-1	2LN053	Rear Axle Stud (Gold) 8SD906105 for Capella	2200600022000	8
4-2	2LN055	Rear Axle Stud for Capella 4P/4+2 M12*1.25 (HUB BOLT)	2200103139000	8
5	2LF012	Rear leaf spring assembly (baked black paint)	2204010062A00	2
6	2LF007	U-bolt (M10 60*52*40)	2200104004C00	4
7		All Metal Hex Flange Face Lock Nuts GB/T6187.1, M10*1.5	2200404004000	8
8	2RE800	Rear axle assembly with Manual Brakes	2204400003001	1
9	2BS750	Steel plate rubber sleeve $\phi 28*\phi 22*\phi 14*22$	2301900004C00	12
10		Rib Bolts M13 x 89 (use 70mm) Bolt, 40Cr/45 steel, Zinc plated	2200103003C00	6
11		All Metal Hex Flange Face Lock Nuts GB/T6187.1,M10*1.5	2200404004000	6
12	2LF021	Connecting plate	2207301263000	4
13	2SK850	Rear shock	2205300031000	2
14	2MO701	AC 32V4KW motor	2101903035000	1

## 4 Steering System



Item No.	STAR EV Part No.	Description	MPN	Qty
		Steering System	2900400082000	
1	2SL035	Steering wheel assembly	2207700001C00	1
2	2ST157	Steering column assembly	2205600001C00	1
3	2ST041	rubber boot	2301900031000	1
4	2ST158	Plastic Cover 45*6.5*3.5cm	2301900032000	1
5		Hex bolt GB/T5783 M8*25	2200100076000	2
6	2ST285	Lower Steering shaft - (Universal Joint)	2206000033A00	1
7	2ST515	Steering Rack with ball studs	2207800034A20	1
8		Hex bolts GB/T5783, M10*55	2200102201000	3
9		All Metal Hex Flange Face Lock Nuts GBT6187.1, M10*1.5	2200404060000	3
10	2HD212	Cotter Pin 3 x 40	2200900010000	2
11	2SW390	Combination Switch	2101400026000	1
11-1		Cross Recessed Flat Head Screws GB/T973 M6*20 A2-70	2200305003000	2
11-2		M6 Flat Washers	2200700088000	2
12		Hex bolts GB/T5783, M10*40	2200102098000	4
13		Flat Washer GB/T97.1 ,M10(20*10.5*2)	2500600013000	8
14		All metal insert lock nut GB/T6184, M10	2200450004000	4

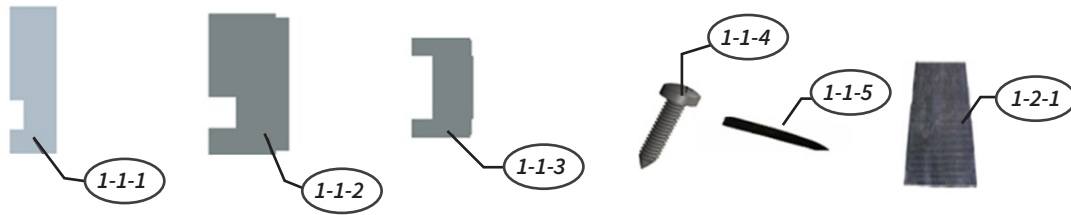
## 5 Brake System



Item No.	STAR EV Part No.	Description	MPN	Qty
		Brake System	2900500128000	
1	2PD700	Brake pedal assembly DG.C2.8-05020030 (A/5)	2206200273000	1
2	2PB701	Pull Rod for parking brake DG.C2.8-05020020	2204800079A00	1
3	2PB700	Compensator	2206100126000	1
4	2BM700	Balance piece DG.C2-150005,57*30.5*24mm,	2208605001C00	1
5	2BM705	Rubber stopper DG.C2-150012,φ12*φ11*φ10*14.2 3mm	2301906013C00	2
6	2CB821	Brake cable PASSENGER side (LONG) 1920*1780, DG-C4	2206900015000	1
7	2CB820	Brake cable- DRIVER side (SHORT) 1680*1540, DG-C4	2206900016000	1
8	2HD200	Clevis Pin 8 x 20	2200902002000	2
9	2HD213	Cotter Pin 2.5 x 16	2200900005000	2
10	2PD810	Brake pedal mounting plate front DH.C2.8-10040040 A/1, 30*30*3	2207301987010	1
11		Hex bolts GB/T5783, M8*45	2200102199000	2
12		M8 Flat washer :GB/T97.1,M8(16*8.4*1.6)	2500600012000	4
13		All metal insert lock nut GB/T6184, M8	2200450003000	2
14	2PD814	Brake pedal mounting plate DH.C2.8-10040030, A/0, 30*30*3	2207301986000	1
15		Hexagon head bolts GB/T5783, M8*20	2200102128000	2
16		M8 Flat washer :GB/T97.1,M8(16*8.4*1.6)	2500600012000	4
17		All metal insert lock nut GB/T6184, M8	2200450003000	2
18		Hexagon socket head screws GB/T70.2, M8*25	2200413062000	4
19		M8 Flat washer :GB/T97.1,M8(16*8.4*1.6)	2500600012000	4
20		All metal insert lock nut GB/T6184, M8	2200450003000	4

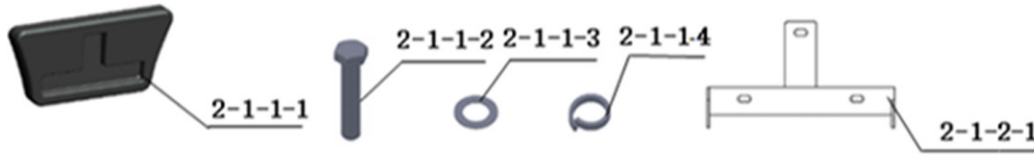


## 6 Body Parts



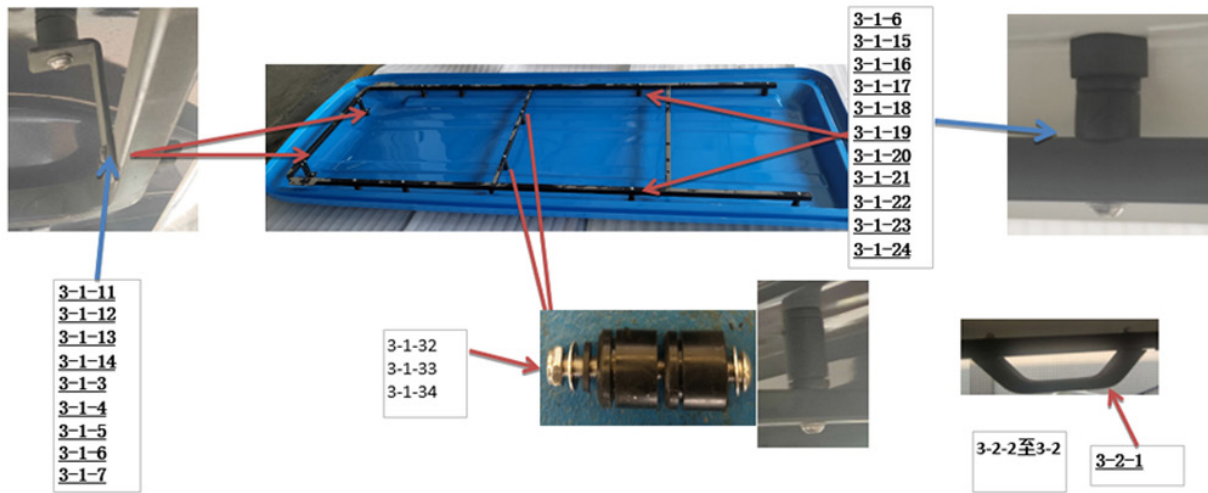
Item No.	STAR EV Part No.	Description	MPN	Qty
		Body Parts	2900700149000	
1-1-1	2BD801	Front Iron Floor (FIREWALL) 360*980, DG.C2. 8-11000012 Q235A/t2 360*980	2207301172A20	1
1-1-2	2BD807	Bottom plate 1 DG.C4.8-11000011 Q235A/t2	2207301287010	1
1-1-3	2BD808	Bottom plate 2 DG.C4.8-11010011,A/4, Q235A/t2	2207301316A40	1
1-1-4	3HD601	M2 x 25 Cross recessed countersunk head self drilling self tapping screw GB/T15856.2 ST4.2 x 25	2200300068000	28
1-1-5	2BD715	EVA die cut flat strip 25mm*3.0mm, 3M	2302605041000	10
1-2		Rubber Floor Components DG-C2-8	2905457002000	1
1-2-1	2FM279	Floormat 1140mm	2302600108000	1.2
1-2-2	3HD865	Plastic nail $\phi 20 \times 1.5 \phi 10$ , L=22mm	2301700004000	10

## 7 Front Guardrail Assembly



Item No.	STAR EV Part No.	Description	MPN	Qty
2-1		Front bumper and mounting accessories DG-C2-8	2905454008000	1
2-1-1		Front bumper (blow molding) and installation accessories DG-C2-8	2905454005000	1
2-1-1-1	2BU800	Front bumper DG.C2.8-05000001	2206400035A10	1
2-1-1-2		Hex bolts GB / T5783, M8*20	2200102128000	3
2-1-1-3		Flat washer GB / T97.1,M8 (16*8.4*1.6)	2500600012000	3
2-1-1-4		M8 Spring washer GB / T93,8.1,	2200701086000	3
2-1-2		Front bumper adjustment kit DH.C2+2.8K	2902703575000	1
2-1-2-1	2BU801	MOUNTING BRACKET for front bumper DG.C2.8L-05010010 (A/2)	2208100250A20	1
2-1-2-2		Hex bolts GB/T5783, M10*30	2200102097000	2
2-1-2-3		M10 Spring washer GB/T93,10.2	2200701087000	2
2-1-2-4		Flat washer GB/T97.1 ,M10 (20*10.5*2)	2500600013000	2

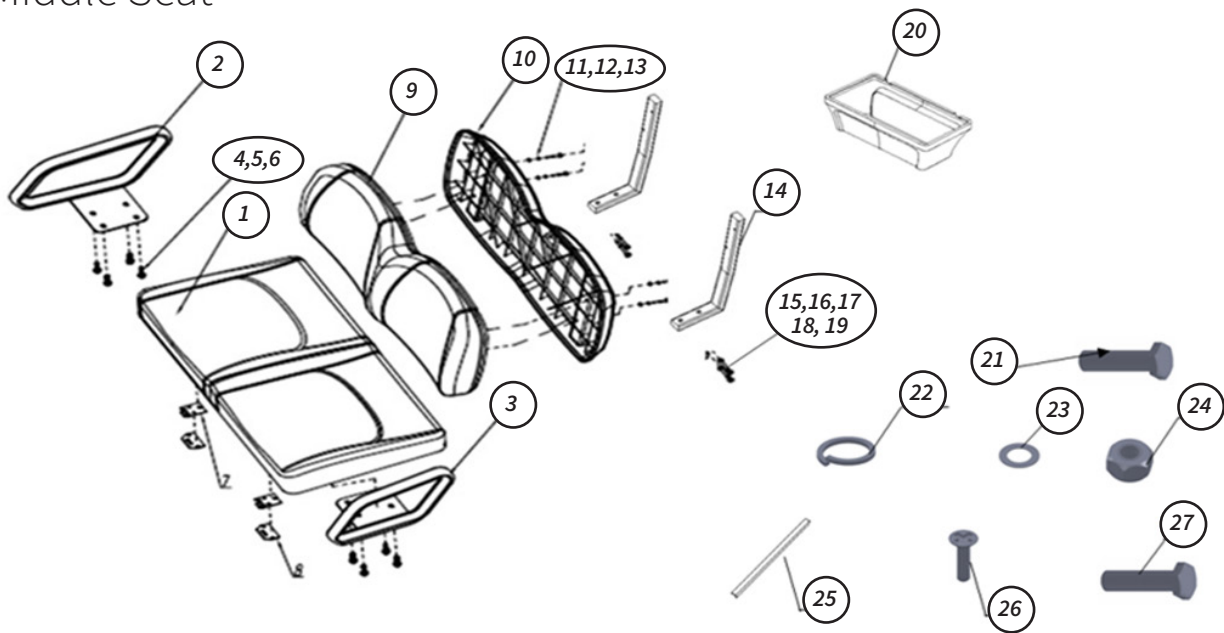
## 8 Roof Parts



Item No.	STAR EV Part No.	Description	MPN	Qty
3-1		Roof and installation accessories DH-C4+2-8K	2905451086000	1
3-1-1		Roof with painting 3M, 4.5MM DG-C4+2/DG-C6	2302501300000	1
	2RF750	Roof- Arctic White	2302502015000	
	2RF751	Roof- Black	2302502016000	
	2RF752	Roof-Candy Apple Red	2302502017000	
	2RF753	Roof- Forest Blue Mist	2302502013000	
	2RF754	Roof- Coastal Blue	2302502019000	
	2RF755	Roof- Sunburst Orange	2302502012000	
	2RF756	Roof- Royal Blue	2302502014000	
	2RF757	Roof- Beige	2302502023000	
	2RF758	Roof- Lime Green	2302502024000	
	2RF759	Roof- Yellow	2302502025000	
	2RF763	Roof- METALLIC SILVER	2302502018000	
3-1-2	2UB204	Roof U bracket - with hardware and handles DH.C4+2.8K-10000010	2207306170000	1
3-1-2-1	2UB205	Roof U bracket only DH.C4+2.8K-10000010(A/0) 15, 25µm	2207203399000	1
3-1-3		Hexagon socket head screws GB/T70.2,M8*50	2200301027000	2
3-1-4		Flat Washers GB/T97.2,8,A200	2200700021000	4
3-1-5	2BS751	Rubber insert, φ26*φ12*28, with φ12*φ8*26 zinc plated steel bushing for Roof	2301903013C00	2
3-1-6		Non-Metallic Insert Hex Lock Nuts GB/T889.1 M8	2200401008000	2
3-1-7	2RF994	Rubber mat DG.C2-150011, φ 16 × φ 9 × 3	2301903001C00	2
3-1-8		Hexagonal cap M8	2301902005000	2
3-1-9	2RF993	Tube end plug 20 *20	2301906004000	2
3-1-10	2RF992	Mounting bracket DG.C4+2.8-10000011, 4mm-Q235	2207301736A00	2
3-1-11		Cross recessed pan head screws GB/T818, M6*40 A2-70	2200304213000	4
3-1-12		spring washer GB/T818, M6*40, A2-70	2200701010000	4

3-1-13		Flat washer GB/T97.1, M6(12*6.4*1.6), A200	2500600017000	8
3-1-14		Cap Nut GB/T923 M6 A2-70	2200402003000	4
3-1-15		Flat head socket head cap screws	2200301037000	8
3-1-16		Flat Washers GB/T97.2,8,A200	2200700021000	16
3-1-17	2RF994	Roof rubber pad (16*8.4*1.6) DN.8.5-17090101	2500600012000	8
3-1-18	2BS751	Rubber insert, $\phi 26 \times \phi 12 \times 28$ , with $\phi 12 \times \phi 8 \times 26$ zinc plated steel bushing for Roof	2301903013C00	8
3-1-19	2RF991	Roof rubber pad (16*8.4*1.6) DN.8.5-17090101	230190808500	8
3-1-20	2RF994	Rubber washer / grommet $\phi 16 \times \phi 9 \times 3$ DG.C2-150011	2301903001C00	8
3-1-21		Hexagonal cap M8	2301902005000	8
3-1-22		Hexagon head bolts GB/T5783 M6*70 A2-70	2200100003000	2
3-1-23		Roof rubber pad (16*8.4*1.6) DN.8.5-17090101	230190808500	2
3-1-24	2RF994	Rubber washer / grommet $\phi 16 \times \phi 9 \times 3$	2301903001C00	2
3-1-25		Non-Metallic Insert Hex Lock Nuts GB/T889.1, M6, A2-70	2200401054000	2
3-1-26		Flat washer GB/T97.1, M6 (12*6.4*1.6)	2500600017000	2
3-1-27		Rubber gasket $\phi 6 \times \phi 15 \times 2.0$	2301908004000	2
3-1-28		Hexagonal cap M6	2301902003000	2
3-1-29		Hexagon head bolts GB / T5783 M10*50 A2-70	2200100018000	4
3-1-30		Flat washer GB / T97.2 10 A200	2200700028000	8
3-1-31		Non-Metallic Insert Hex Lock Nuts	2200401010000	4
3-1-32		Hexagon head bolts / T889.1, M10,8	2200100110000	4
3-1-33		Flat washer GB/T97.2 10 A200	2200700028000	8
3-1-34		Non-Metallic Insert Hex Lock Nuts GB/T889.1, M10, 8	2200401010000	4
3-2	2RF040	Handle assembly	2902700109000	5
3-2-1	2RF941	Handle	2301200001000	1
3-2-2		Cross recessed pan head screws GB/T818, M6*40, A2-70	2200304213000	2
3-2-3		Non-Metallic Insert Hex Lock Nuts GB/T889.1, M6, A2-70	2200401054000	2
3-2-4		Flat washer GB/T97.1, M6 (12*6.4*1.6), A200	2500600017000	2
3-2-5		Hexagonal cap M6	2301902003000	2

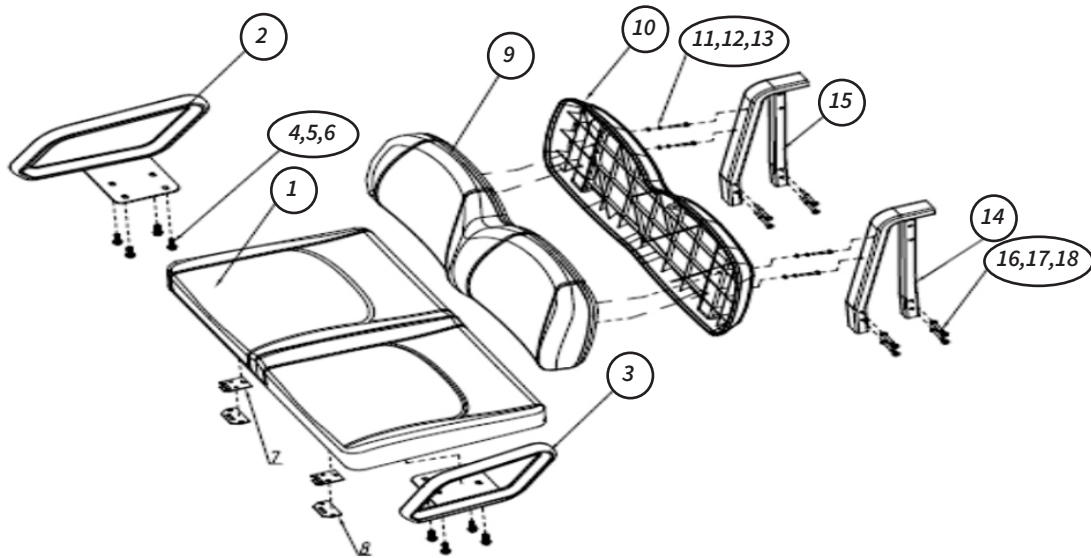
## 9 Middle Seat



Item No.	STAR EV Part No.	Description	MPN	Qty
		Body Parts-Middle Seat	2900700149000	
1	2CS450	Beige Front seat cushion (POD) DG.LSV4.2-05000031(A/1) 1050*440*110,	2501500254010	1
	2CS450-HK	*HK ONLY* Capella-POD Bottom BEIGE Cushion (2023 & LATER)	3108024549	1
2	2CS036	Passenger side Armrest (large) DG.C2.8-05000033, PE/EVA	2202600149A00	1
3	2CS035	Driver side armrest DG.C2.8-05000034,PE/EVA	2202600150A00	1
4		Hexagon head bolts GB/T5783,M8*25, 8.8 300	2200100467000	8
5		Flat washer GB/T97.1, M8 (16*8.4*1.6) 300	2500600012000	8
6		spring washer GB/T93,8.1,300	2200701086000	8
7	2PS145	Plastic BASE for the ball on the Pod seat (female) 25mm	2200001301000	4
7-1		Cross recessed pan head tapping screws GB/T845 ST4.8*20, A2-70 300	2200500173000	8
8	2PS140	Plastic ball only for seats (MALE) 16mm, M8* 46mm	2301700017000	4
8-1		M8 Hexagon lock nut with non-metallic insert GB/T889.1, M8, A2-70	2200401052000	4
9	2CS451	BEIGE Backrest Cushion DG.C2.8-05000035 (A2) 4*M6	2501500250010	1
	2CS451-HK	*HK ONLY* CAPELLA, BEIGE Backrest Cushion - Front, pod & OEM Flip seat FOR Capella, OPEN Workmachine, Capella Lifted (2023 & LATER)	3407012635	1
10	2CS080	Backrest cover DG.C2.8-05000036	2501506024A00	1
11		Hexagon head bolts GB/T5783 M6*65 A2-70	2200100023000	4
12		Flat Washers GB/T97.2 6 A200	2200700015000	4
13		M6 spring washer GB/T93,6	2200701010000	4
14	2PS080	Backrest bracket DG.LSV4.2-05000010(A/2)	2207201802A00	2
15		Hexagon socket head screws GB/T 70.2, M8*70	2200301231000	4
16		Hexagon socket head screws	2200301198000	4

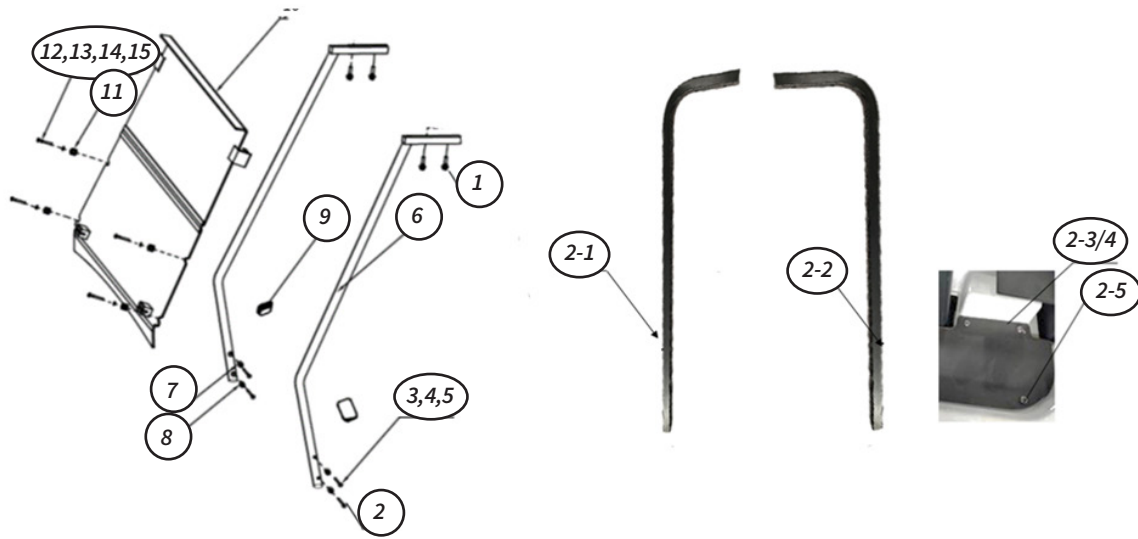
17		Flat Washers GB/T70.2, M8*45	2200700021000	4
18		M8 SPRING WASHER GB/T93,8,	2200701012000	4
19	2PS081	Backrest bracket rubber cover DH.C4.8-05000502	2301900182A00	2
20		Mid seat pod DG.LSV4.2-05000050(A/1	2400501231010	1
	2PS650	Pod - Pure White		
	2PS651	Pod - Coastal Blue		
	2PS652	Pod - Candy Apple RED		
	2PS653	Pod - Royal Blue		
	2PS654	Pod - Lime Green		
	2PS655	Pod - Black		
	2PS656	Pod - Forest Blue Mist		
	2PS657	Pod - Sunburst Orange		
	2PS658	Pod - Beige		
	2PS659	Pod - Yellow		
	2PS661	Pod - Metallic Silver		
21		Hexagon head bolts GB / T5783, M8*40	2200102130000	4
22		Flat Washers GB / T97.1,M8 (16*8.4*1.6)	2500600012000	4
23		spring washer GB / T93,8.1,	2200701086000	4
24		All metal insert lock nut GB / T6184, M8	2200450003000	4
25	2RP798	Rocker Panel / Side Rail DG.C4.8-11000030	2208200195A00	2
26		Countersunk head Phillips screw GB/T819.1 M6*20 A2-70	2200302002000	5
27		Hexagon head bolts GB/T5783 M8*55 A2-70	2200100013000	2

## 10 Rear Seat



Item No.	STAR EV Part No.	Description	MPN	Qty
		Body parts--Rear seats	2900700044000	
1	2CS452	BEIGE- Bottom cushion for over batteries DG.C2.8-05000031(A/4) 1030*500*120	2501500246020	1
	2CS452-HK	*HK ONLY* CAPELLA BEIGE - Bottom cushion for over batteries Capella, OPEN Workmachine, Capella Lifted (2023 & LATER)	3108024550	1
2	2CS036	Passenger side Armrest (large) DG.C2.8-05000033, PE/EVA	2202600149A00	1
3	2CS035	Driver side armrest DG.C2.8-05000034 ,PE/EVA	2202600150A00	1
4		Hexagon head bolts GB/T5783,M8*25	2200100467000	8
5		Flat Washers GB/T97.1,M8(16*8.4*1.6)	2500600012000	8
6		spring washer GB/T93,8.1	2200701086000	8
7	2HG040	Hinge 4"	2202200001000	2
8		Cross recessed countersunk head bolts GB819-85 M6*20, A2-70	2200107011000	12
9	2CS451	BEIGE Backrest cushion DG.C2.8-05000035 (A2)	2501500250010	1
10	2CS080	Plastic Backrest cover DG.C2.8-05000036	2501506024A00	1
11		Hexagon head boltsGB/T5783 M6*65 A2-70	2200100023000	4
12		Flat Washers GB/T97.2 6 A200	2200700015000	4
13		spring washer GB/T93,6	2200701010000	4
14		Backrest bracket welded left (driver side) DH.C2.8-04020000	2207201378A00	1
15		Backrest bracket welded right (passenger side) DH.C2.8-04010000	2207201379A00	1
16		Hexagon head bolts GB/T5782 M8*70 8.8	2200100091000	8
17		GB/T97.2,8,A200	2200700021000	8
18		spring washer GB/T93,8 :316	2200701012000	8
19		All metal insert lock nut GB/T6184, M8	2200450003000	10

# 11 Roof Support / Windshield Assembly

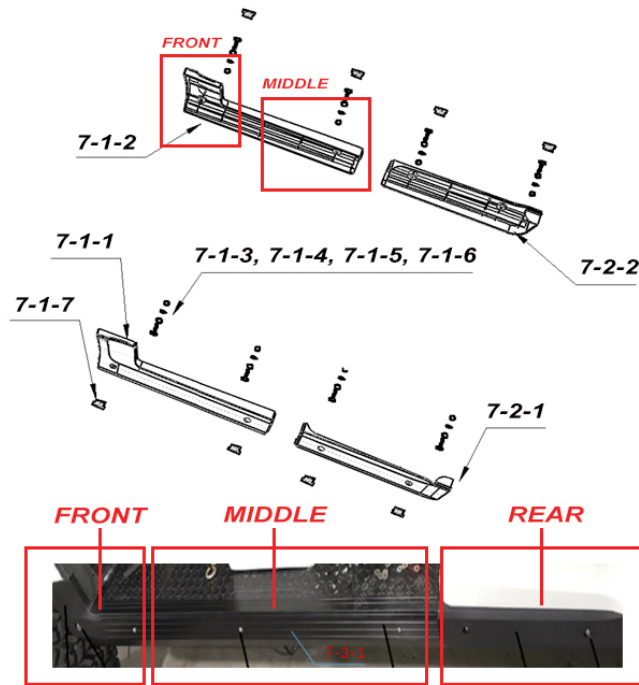


Item No.	STAR EV Part No.	Description	MPN	Qty
1		Hexagon socket head screws GB / T 70.2, M8*50	2200301229000	4
2		Hexagon head bolts GB / T5783,M12*100	2200100294000	2
3		Hexagon head bolts GB / T5783,M12*90,8.8	2200100048000	2
4		Flat Washers GB / T97.2,8,A200	2200700021000	4
5		Spring washer GB/T93,8	2200701012000	4
6	2BC215	Roof Support Front Driver or Passenger Side DH.C2+2.8D-11000010 (A1)	3302017579	2
7	2BC951	Spacer 1 Q235A / 25*5	2202100161A00	2
8	2BC952	Spacer 2 Q235A / 25*5	2202100191A00	2
9	2WS802	Front roof support plug DH.C2.8-09011012, (A/0) PVC T=2.5mm	2301906106000	1
9-1		Hex bolts GB/T5783, M10*50, A2-70	2200102107000	4
		Flat washer GB/T97.1, M10(20*10.5*2), A200	2500600019000	4
		Spring washer GB/T93,10.2	2200701093000	4
		Non-Metallic Insert Hex Lock Nuts GB/T889.1 M10,A2-70,	2200401053000	4
		Flip Windshield and Mounting Accessories DH-C2+2-8		1
10	2WS091	Flip windshield	2400700451000	1
11-15	2WS471	ASSEMBLED MOUNTING Hardware for Capella Windshields (#11-15)		
11	2WS472	Black Rubber mount $\Phi 20^* \Phi 14^* 16$ , 7mm opening, includes $\phi 10^* \phi 7^* 14$ bushing DG.C2-050027	2303900005C00	4
12	2WS473	Rubber cushions / bumpers for windshield	2301903003000	4
13	2WS474	Cross recessed pan head screws GB/T818 M6*65 A2-70	2200304126000	4
14	2WS475	Large flat washer GB/T96, M6 (18*6.4*1.6 A200)	2200704005000	4
15	2WS476	Non-Metallic Insert Hex Lock Nuts GB/T889.1, M6,A2-70,	2200401054000	4



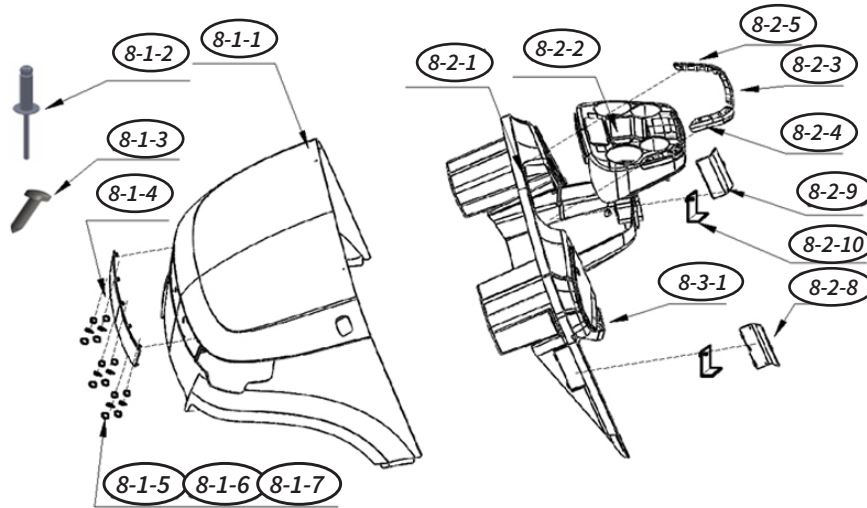
2-1	2BK262	Rear roof support DH.C2+2.8D-05000050 (A/0)	3302017125	1
2-2	2BK261	Rear roof support DH.C2+2.8D-05000050 (A/0)	3302017128	1
2-2-1		Hex bolts GB/T5783, M8*80, A2-70	2200102167000	6
		Flat washer GB/T97.1, M8(16*8.4*1.6), A200	2500600018000	12
		Non-Metallic Insert Hex Lock Nuts GB/T889.1,M8,A2-70	2200401052000	6
		Hexagonal cap M8	2301902005000	8
2-2-2		Hex bolts GB / T5782, M10*70, A2-70	2200102109000	4
		Flat washer GB / T97.1, M10 (20*10.5*2) A200	2500600019000	4
		Spring washer GB / T93,10.2	2200701093000	4
		Non-Metallic Insert Hex Lock Nuts GB/T889.1, M10, A2-7	2200401053000	4
2-3	2BK911	Rubber cover for Passenger Side -REAR roof supports DG.C2+2.8-05000020 (A1) ABS	2301906069010	1
2-4	2BK910	Rubber cover for Driver Side -REAR roof supports DG.C2+2.8-05000032 (A0) ABS	2301906119000	1
2-5		Cross recessed large flat head self-drilling self-tapping screws GB/T15856.1 ST4.2*13	2200300069000	1

## 12 Body Side Guard Rail Assembly



Item No.	STAR EV Part No.	Description	MPN	Qty
7-1		Front side guardrail assembly	2905458066000	1
7-1-1	2RP795	Short front side rail driver side (REV 2) rounded corner	2208200305A20	1
7-1-1	2RP785	Short front side rail driver side (REV 1) angled corner	2208200305000	
7-1-2	2RP796	Short front side rail passenger side (REV 2) rounded corner	2208200306A20	1
7-1-2	2RP786	Short front side rail passenger side (REV 1) rounded corner	2208200306000	
7-1-3		Hexagon socket head screws GB / T70.2, M8*35 A2-70	2200301020000	4
7-1-4		Flat Washers GB / T97.2,8,A200	2200700021000	4
7-1-5		Spring washer GB / T93,8, 316	2200701012000	4
7-1-6		Hex nuts GB/T6170 M8	2200400010000	4
7-1-7	2RP780	Rubber stopper DG.C2.8-05000090	2301906067000	4
7-2		Rear side guardrail assembly	2905458015000	1
7-2-1	2RP782	Rear side rail driver side DG.C2.8-05000019	2208200191A00	1
7-2-2	2RP784	Rear side rail passenger side DG.C2.8-05000093	2208200192A00	1
7-2-3		Hexagon socket head screws GB/T70.2, M8*35 A2-70	2200301020000	4
7-2-4		Flat Washers GB/T97.2,8,A200	2200700021000	4
7-2-5		Spring washer GB/T93,8, 316	2200701012000	4
7-2-6		Hex nuts GB/T6170 M8	2200400010000	4
7-2-7	2RP780	Rubber stopper DG.C2.8-05000090	2301906067000	4
7-3		Middle side guardrail assembly	2905458027000	1
7-3-1	2RP787	Aluminum side rail DG.C4.8-05000031 (A/0)	2208200308000	2
7-3-2		Cross Recessed Flat Head Screws GB/T973 M6*20 A2-70	2200305003000	4

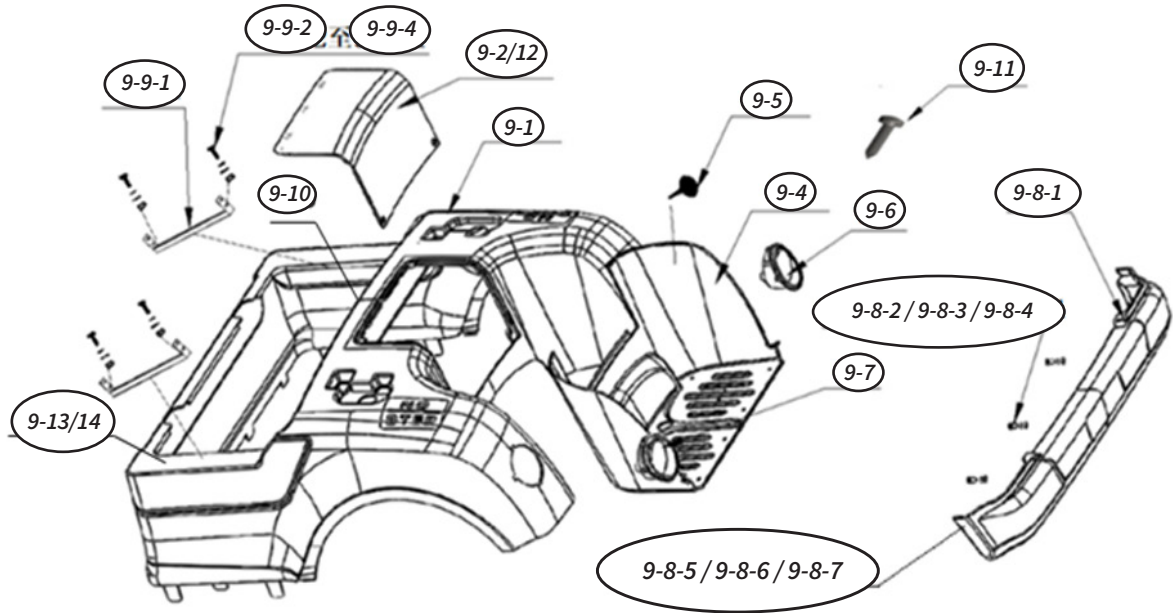
# 13 Front Body Assembly



Item No.	STAR EV Part No.	Description	MPN	Qty
8-1		Front body and mounting accessories DG-C2-8	2905484002000	1
8-1-1		Front body with painted DG.C2.8-05000002	2400200702000	1
8-1-1-1	2BO660	Front body UNPAINTED Front Body DG.C2.8-05000002	2302100109000	1
	2BO650	Front Body - Pure White		
	2BO651	Front Body - Coastal Blue		
	2BO652	Front Body - Candy Apple Red		
	2BO653	Front Body - Royal Blue		
	2BO654	Front Body - Lime Green		
	2BO655	Front Body - Black		
	2BO656	Front Body - Forest Blue Mist		
	2BO657	Front Body - Sunburst Orange		
	2BO658	Front Body - Beige		
	2BO659	Front Body - Yellow		
	2BO661	Front Body - Metallic Silver		
8-1-2		Rivet 5 x 30	2200016998000	10
8-1-3		Cross recessed pan head tapping screws GB/T845,ST2.9*14mm	2200500093000	10
8-1-4	2BO699	Front grill DG.C2.8 - 05000003 ABS	2305201001000	1
8-1-4-1		Front grill DG.C2.8 - 05000003 ABS	2305201002A10	1
8-1-5		Hex nuts GB/T6170 M5	2200400015000	6
8-1-6		Flat Washers GB/T97.1 5	2200700010000	6
8-1-7		Spring pad GB/T93 5	1205002006000	6
8-2		Dashboard Parts	2905442005000	1
8-2-1	2DB041	Dashboard DG.C2.8-05000010	2301600024A10	1
8-2-2	2CP800	Cupholder on dashboard DG.C2.8-05000011	2305101001000	1
8-2-3	2CP801	Middle- Decorative TRIM for Cupholder DG.C2.8-05000081	2300400462A00	1
8-2-3-1		Middle decorative panel DG.C2.8-05000081	2300400466A00	1
8-2-4	2CP802	Driver Side- Decorative TRIM for Cupholder DG.C2.8-05000082	2300400463A00	1
8-2-4-1		Driver side trim panel DG.C2.8-05000082	2300400467A00	1

8-2-5	2CP803	Passenger Side- Decorative TRIM for Cupholder DG.C2.8-05000083	2300400464A00	1
8-2-5-1		Passenger side trim panel DG.C2.8-05000083	2300400468A00	1
8-2-6		Cross recessed pan head tapping screws GB/ T845,ST2.2*8mm	2200500078000	6
8-2-7		Cross recessed pan head tapping screws GB/ T845,ST2.9*14mm	2200500093000	2
8-2-8	2DB718	Access panel for Driver side roof support bracket DG.C2.8-05000016	2207301155A00	1
8-2-9	2DB719	Access panel for Passenger side roof support bracket DG.C2.8-05000017	2207301156A00	1
8-2-10	2DB721	Mounting plate for roof support bracket DG.C2.8- 05000513,2mm-Q235	2207300249A00	2
8-2-11		Baffle mounting plate DG.C2.8-05000513,2mm-Q235	2207300250A00	1
8-2-12		Round head Phillips screw PWM M4*18mm	1205209095A00	2
8-2-13	2HD117	Open oval head blind rivets GB/T12618 5*15	2201000011000	18
8-3		Stadium car ball grid installation accessories DG-C2-8	2903200577000	1
8-3-1	2DB717	Ball Holder DG.C2.8-05000015	2300400219000	2
8-3-2		Cross recessed pan head tapping screws GB/ T845,ST2.9*14mm	2200500093000	6

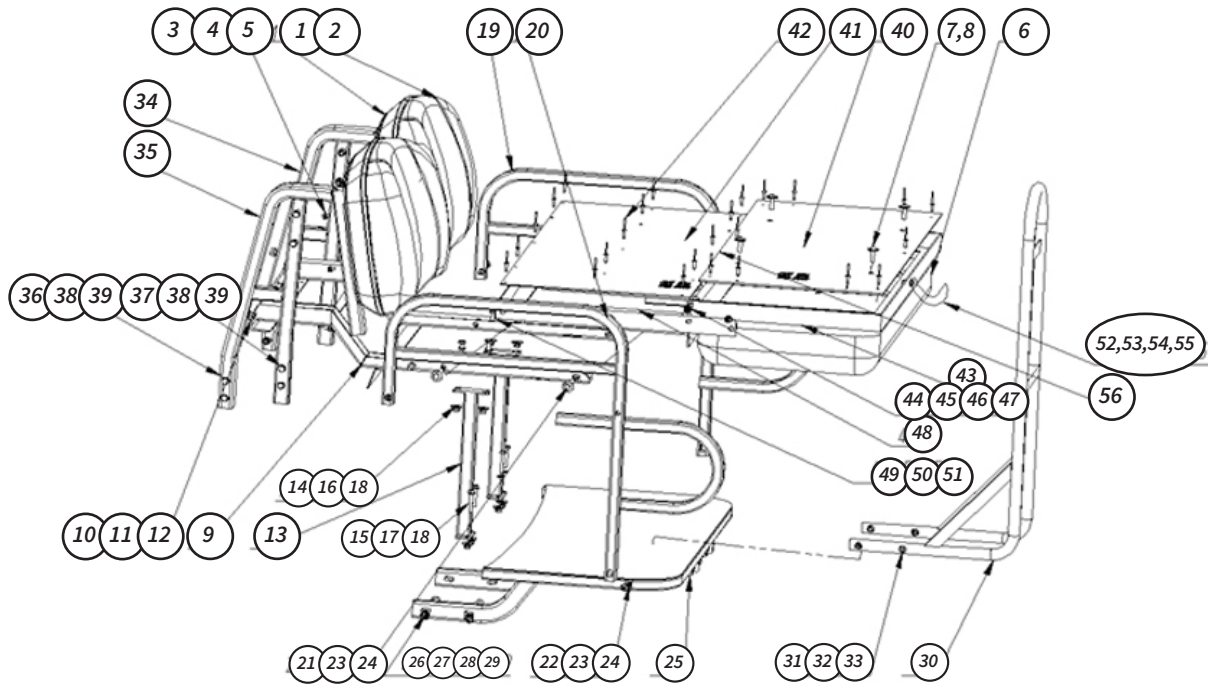
## 14 Rear Body Parts



Item No.	STAR EV Part No.	Description	MPN	Qty
9-1		Rear body	2400200701000	1
	2BY650	Rear Body - Pure White		
	2BY651	Rear Body - Coastal Blue		
	2BY652	Rear Body - Candy Apple RED		
	2BY653	Rear Body - Royal Blue		
	2BY654	Rear Body - Lime Green		
	2BY655	Rear Body - Black		
	2BY656	Rear Body - Forest Blue Mist		
	2BY657	Rear Body - Sunburst Orange		
	2BY658	Rear Body - Beige		
	2BY659	Rear Body - Yellow		
	2BY662	Rear Body - Metallic Silver		
9-2		Maintenance Cover Assembly DH.C2+2.8K-05000024 A1	2200024788010	1
9-2-1	2MO091	maintenance cover DG.C2.8-05000023	2207301149A10	1
9-3	2PS094	Pod Seat Round VENT / Cap / Plug DG-C4/6	2300800007000	2
9-4	2GB180	Bagwell Liner DG.C2.8-05000024(A/1)	2303400081A10	1
9-5	2GB181	Plastic nail $\Phi 17.5 \times 23$ mm for Bagwell Liner	2301700001000	12
9-6	2LT762	Rear headlight housing (passenger side) DG.C2.8-05000026 ABS	2100700271000	1
9-7	2LT761	Rear headlight housing (driver side) DG.C2.8-05000026 ABS	2100700252000	1
9-8		Rear bumper and mounting accessories DG-C2-8	2905454007000	1
9-8-1	2BR850	Rear bumper DG.C2.8-05000030 (A/1)	2301800040A10	1
9-8-2		Hex bolts GB / T5783, M8*20	2200102128000	3
9-8-3		Flat Washers GB / T96, 8	2200700188000	3
9-8-4		Spring washer GB / T93,8.1,	2200701086000	3

9-8-5		Cross Recessed Flat Head Screws GB/T973, M6*20, A2-70	2200305026000	2
9-8-6		Flat Washers GB/T97.1, M6(12*6.4*1.6), A200	2500600017000	2
9-8-7		Non-Metallic Insert Hex Lock Nuts GB/T889.1, M6,A2-70	2200401054000	2
9-9		Rear body support rod installation and accessories	2905445003000	1
9-9-1	2BY999	Support Bracket / Rod for Rear Body DG.C2.8-11000100(A/2) J20*10*2-GB/T6728 Q235-GB/T700	2204900170020	2
9-9-2		Hex bolts GB/T5783, M6*15, A2-70	2200102204000	8
9-9-3		Flat washer GB/T97.1, M6(12*6.4*1.6), A200	2500600017000	16
9-9-4		Non-Metallic Insert Hex Lock Nuts GB/T889.1, M6,A2-70,	2200401054000	8
9-10	2BY998	Access Panel / battery cover for Rear Body DG.C2.8-05000000, A/0)	2300400325000	1
9-11		Cross recessed pan head screws GB/T818, M4*12, A2-70	2200304197000	4
9-12		Ø20 mushroom head buckle GOGO3-050051,B9983-048, Ø20mm	2202001014A00	4
9-13		EVA die-cut flat strip (passenger side) DG.C2.8K-01000001, A/0, 180*35*5.0mm	2600704014000	5
9-14		EVA die-cut flat strip (driver side) DG.C2.8K-01000002A/0, 180*35*5.0mm	2600704015000	5

# 15 Flip Seat Assembly



Item No.	STAR EV Part No.	Description	MPN	Qty
1	2CS451	BEIGE Backrest Cushion DG.C2.8-05000035(A2)	2501500250010	1
2	2CS080	backrest cover DG.C2.8-05000036	2501506024A00	1
3		M8 x 65 A2-70 SS Hex bolt	2200102170000	4
4		M6 washer GB/T97.1, M6(12*6.4*1.6) A200	2500600017000	4
5		M6 Spring washer GB/T93,6.1	2200701091000	4
6	2CS454	Capella-Flip Bottom BEIGE Cushion (OEM) DH.C2+2.8D-04050000(A1	2501500258010	1
	2CS454-HK	*HK ONLY* Capella-Flip Bottom BEIGE Cushion (OEM) (2023 & LATER)	3108024607	1
7		Hexagon socket head screws GB/T 70.2, M8*30, A2-70	2200301234000	4
8		M8 LARGE WASHER GB/T96,M8 (24*8.4*2, A200 DH.C2+2.8D-04060000(A/2)	2200704006000	4
9	2FP910	Support frame for Capella OEM FLIP SEAT DH.C2+2.8D-04060000 (A/2)	2207201876A20	1
9-1		rear seat bracket	2207201877A20	1
10		M10 x 50 Outer hexagon bolt GB/T5783, M10*50, A2-70	2200102107000	2
11		M10 WASHER GB/T97.1, M10(20*10.5*2), A200	2500600019000	4
12		M10 Hexagon lock nut with non-metallic insertGB/T889.1, M10,A2-70	2200401053000	2
13	2FP909	Seat support column DH.C2+2.8D-18000700 (A/1)	2208300192A00	2
14		M8 x 25 Outer hexagon bolt GB/T5783, M8*25, A2-70	2200102184000	4
15		M8 x 45 Outer hexagon bolt GB/T5783, M8*45, A2-70	2200102168000	4
16		M8 Flat washer GB/T97.1, M8(16*8.4*1.6), A200	2500600018000	8
17		M8 LARGE WASHER GB/T96, M8(24*8.4*2, A200)	2200704006000	8

18		M8 Hexagon lock nut with non-metallic insert GB/T889.1, M8,A2-70	2200401052000	8
19	2FP915	Flip seat armrest left DG.C2+2.8-06000100, A/1	2202600310000	1
20	2FP916	Flip seat armrest right DG.C2+2.8-06000200, A/1	2202600312000	1
21		M8 x 40 Hexagon socket flat round head screw: GB/T 70.2, M8*40, A2-70	2200301235000	4
22		Hexagon socket head screws GB/T 70.2, M8*65, A2-70	2200413039000	2
23		M8 Flat washer GB/T97.1, M8 (16*8.4*1.6), A200	2500600018000	12
24		Non-Metallic Insert Hexagon Head Lock Nuts	2200401052000	6
25	2FP907	Footboard DH.C2+2.8D-06000000(A/2)	2206200254A20	1
26		Hex bolts GB/T5782, M10*70	2200102101000	4
27		Hexagon nut GB/T6170, M10	2200400146000	4
28		Flat Washer GB/T97.1 ,M10 (20*10.5*2)	2500600013000	8
29		M10 Spring washer	2200701087000	4
30	2FP908	Grab Handle, DG.C2+2.8-06000300, A/0	2206200299000	1
31		M8 x 45 Outer hexagon bolt GB/T5783, M8*45, A2-70	2200102168000	4
32		M8 Flat washer GB/T97.1, M8 (16*8.4*1.6), A200	2500600018000	8
33		M8 Hexagon lock nut with non-metallic insert GB/T889.1, M8,A2-70	2200401052000	4
34	2FP904	Backrest bracket weldment passenger side DH.C2+2.8D-04010000 (A/3)	2207202023010	1
35	2FP903	Backrest bracket weldment driver side DH.C2+2.8D-04020000 (A/3)	2207202024010	1
36		M8 x 70 Outer hexagon bolt GB/T5783, M8*70, A2-70	2200102206000	4
37		GB/T5783, M8*55, A2-70	2200102169000	4
38		M8 Flat washer GB/T97.1, M8 (16*8.4*1.6) A200	2500600018000	16
39		M8 Hexagon lock nut with non-metallic insert GB/T889.1, M8,A2-70	2200401052000	8
40	2FP911	Flip board - PLATE DH-C2+2.8D-04000030 (A/2), 3MM	2200016091010	1
41		Reverse bottom plate DH-C2+2.8D-04000023 (A/2), 3MM	2200016092010	1
42		Rivet 5 x 15, GB/T12618 5*15 A2-70	2201000010000	30
43		Flip seat frame DH.C2+2.8D-05000040 (A/3)	2200016089020	1
44	2FP914	Rotating shaft sleeve DH.C2+2.8D-05000041	2200016490A00	2
45		Hexagon socket head screws GB/T 70.2, M8*30, A2-70	2200301234000	2
46		M8 Flat washer GB/T97.1, M8 (16*8.4*1.6), A200	2500600018000	4
47		M8 Hexagon lock nut with non-metallic insert GB/T889.1, M8,A2-70	2200401052000	2
48		Reverse Mounting Bracket DH.C2+2.8D-05000030 (A/3)	2200016090030	1
49		M8 x 70 Outer hexagon bolt GB/T5783, M8*70, A2-70	2200102206000	4
50		M8 Flat washer GB/T97.1, M8 (16*8.4*1.6) A200	2500600018000	8
51		M8 Hexagon lock nut with non-metallic insert GB/T889.1, M8,A2-70	2200401052000	4
52	2FP917	Woven belt L*W (400*40mm)	2501306018000	1
53		Cross recessed pan head screws GB/T973, M6*20, A2-70	2200305026000	1
54		M6 Large washer GB/T96, M6 (18*6.4*1.6)	2200704005000	1
55		Non-Metallic Insert Hex Lock Nuts GB/T889.1, M6,A2-70	2200401054000	1
56	2DC902	Decorative strips 14*9mm, PVC	2302605033000	2

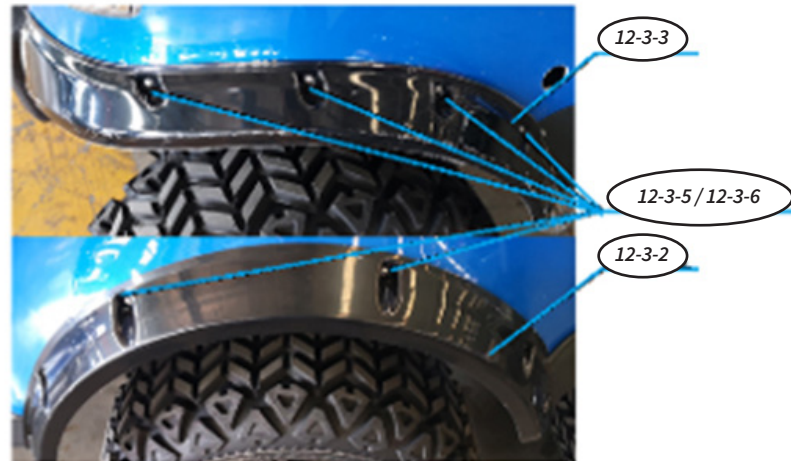


## 16 Mudguard and Mounting Accessories



Item No.	STAR EV Part No.	Description	MPN	Qty
11-1-1	2FN811	Rear mudguard (Passenger side) DG.C2.8D-05000028	2302305114A00	1
11-1-2	2FN810	Rear mudguard (Driver side) DG.C2.8D-05000029	2302305115A00	1
11-1-3		Hex bolts GB/T5783, M6*15	2200102246000	2
11-1-4		Large flat pad	2200704005000	4
11-1-5		All metal insert lock nut GB/T6184, M6	2200450002000	2
11-1-6		Hexagon Flange Tapping Screws ST4.2*25, GB/T15856.4	2200500137000	4
11-1-7		Large flat washer GB/T96, M5 (15*5.3*1)	2301908145000	4

## 17 Fender Flare and Mounting Accessories



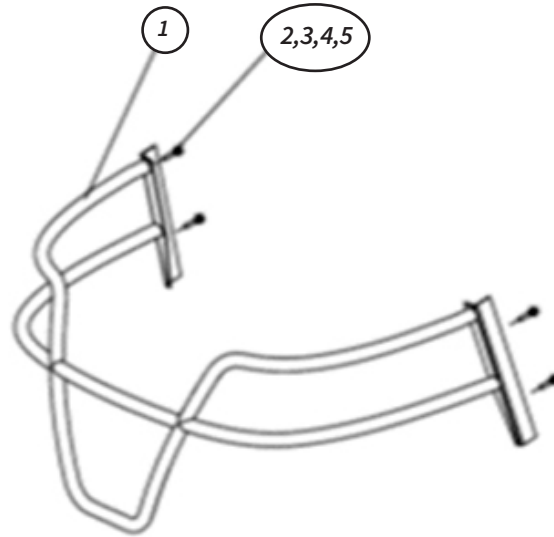
Item No.	STAR EV Part No.	Description	MPN	Qty
12-3-1	2FN805	Fender flare rear driver side DH.C2.8-05151600, 3.0T	2302900006A00	1
12-3-2	2FN806	Fender flare rear passenger side DH.C2.8-05151800 3.0T	2302900007A00	1
12-3-3	2FN850	Fender flare front driver side DH.C2.8-05151900, 3.0T	2302900008A00	1
12-3-4	2FN851	Fender flare front passenger side DH.C2.8-05151700, 3.0T	2302900009A00	1
12-3-5		Cross recessed pan head tapping screws GB/T845 ST4.8*25, A2-70	2200500233000	24
12-3-6		Flat washer GB/T97.1, M5 (10*5.3*1) A200	2500600016000	24

## 18 Tire and Installation Accessories



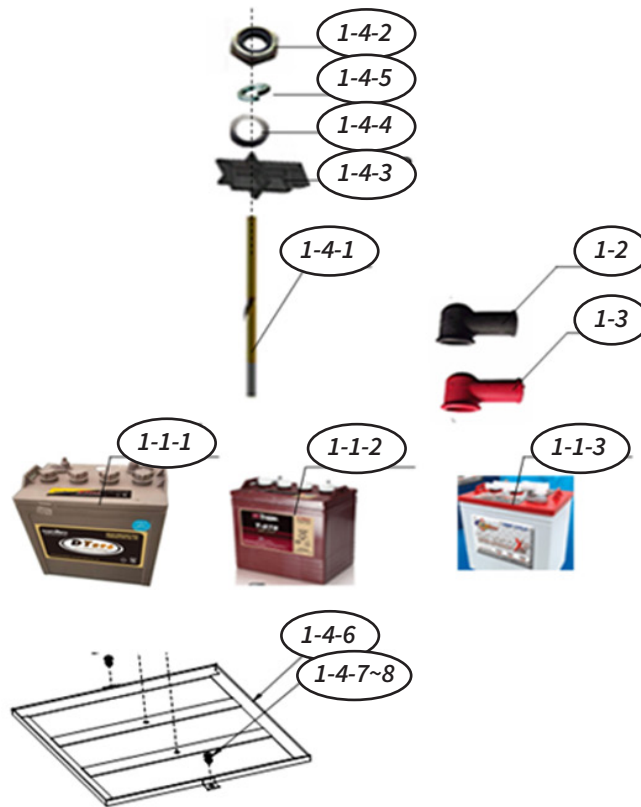
Item No.	STAR EV Part No.	Description	MPN	Qty
1	2CC130	Center cap DH-C2	2209000002000	4
2	2TR516	Tire only - AT22*10-10,4PTL	2301400010000	4
3		Rim optional components	2905476001000	1
3-1	2RM908	Default Steel Rim 10 x 8	2205100099000	4
3-2	2RM918	UPGRADE ALUMINUM Rim 10 x 8	2200016661000	4
4		Valve	2205900005000	4
5	2LN015	Lugnut	2200406043000	16

## 19 Front Bumper Mounting



Item No.	STAR EV Part No.	Description	MPN	Qty
1	2BG800	Front Brush Guard DH.C2.8-18000100(A/3), $\Phi 38$	2206400033030	1
2		Hex bolts GB/T5783, M10*50	2200102099000	4
3		All Metal Hex Flange Face Lock Nuts, GB T6187.1,M10*1.25	2200404061000	4
4		M10 Spring washer	2200701087000	4
5		Flat Washer GB/T97.1 ,M10(20*10.5*2)	2500600013000	4

## 20 Battery Installation



Item No.	STAR EV Part No.	Description	MPN	Qty
1		Battery unit and mounting accessories DH-C2-8G, 48V	2905466080000	1
1-1		Battery 8V, 48V	2100101377000	1
1-1-1		DT896E	2100101050000	6
1-1-2		Outsourced battery 8V/170AH TROJAN T875	2100101017000	6
1-1-3		Outsourced battery 8V/170AH: US 8VGC	2100101018000	6
1-2	2BT402	Terminal Cap BLACK	2301902002000	12
1-3	2BT404	Terminal Cap RED	2301902001000	12
1-4		Battery Mounting Accessories DH-C2-8	2904200065000	1
4-1	2BT045	Battery tightening screw DHWQY.2-06000001	2200200002B00	2
4-2		Hex nuts GB/6170 M8,8	2200400012000	6
4-3	2BT036	battery pressure plate DN.4A-06000001	2207300286B10	2
4-4		M8 Flat Washers GB/T97.2 8	2200700023000	6
4-5		M8 Spring Washer GB/T93,8	2200701011000	2
4-6		8V Battery holder DG. C2.8-10002000, 30mm	2203900049A20	1
4-7		M8 x 25 Bolt, Hex Head	2200100029000	2
4-8		M8 A200 SS Flat Washer	2200700021000	2
4-9		M8 A2-70 SS Lock Nut	2200401003000	2

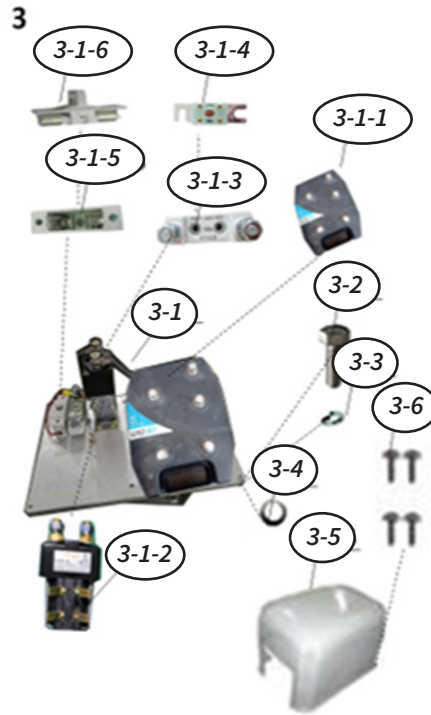
## 21 Battery Controller Motor Harness



Item No.	STAR EV Part No.	Description	MPN	Qty
1		Battery 8V	2100101035000	6
1-1		DT896E	2100101050000	6
2	2BT402	Terminal Cap BLACK	2301902002000	12
3	2BT404	Terminal Cap RED	2301902001000	12
4	2MO701	Motor (AC 32V 4KW AQHT4-4003B)	2101903035000	1
5		M6 x 25 Hex bolts DIN933,M6*25	2200100257000	3
6		M6 Spring Washer, GB/T93,6	2200701010000	3
7		M6 Flat Washers	2200700088000	3
8		Controller Assembly 48V450A, 1234SE DH-C2-8A 400*204	2901501016000	1
9		M8 A2-70 SS Lock Nut	2200401003000	4
10		M8 A200 SS Flat washer	2200700021000	4
11	2CN916	COVER- 320 x 214x 145mm for controller	2304401700C10	1
12		M5 x 15 Cross recessed pan head screw, GB818-85 M5*15	1205211014000	4
13	2SW430	Switch - Forward / Reverse	2101400208000	1
14	2SW152	Backup Beeper / buzzer with terminal wires DG. C2-170213, 2.8-2P	2902400002C00	1
14-1		Buzzer 48V, DG-C2	2101602010000	1
14-2		Pin Terminal MX2.8, (16-20#) 35711-0210	1205505010000	2
14-3		Terminal housing, MX35957-0210,2.8-2P 66	1306413001000	1
15	2MT221	Battery indicator 48V, IPD48BGMAO	1931170100000	1
16	2SW291	Universal Ignition switch with keys	2101500048000	1

17	2SW146	Headlight switch	2101400036000	1
18	2SW170	Hazard Alarm Switch	2101400035000	1
19		Charging socket Y-3 AC220V	2100600051000	1
20		Cross Recessed Flat Head Screws GB/T973 M6*20 A2-70	2200305003000	4
21		M6 Flat Washers	2200700088000	4
22	2WS476	M6, A2-70 Hexagon lock nut with non-metallic insert stainless steel	2200401001000	4
23		Battery cable	2100400036C00	1
24		Controller positive and negative power lines DH.C2.8-14000003	2901701198A00	1
25	2BT154	Motor connection line DG.C2.8A-14002004, A1	2901706137A10	1
26	2WH959	Power control circuit harness DH.C4.8-14000005	2901705294A00	1
27		Data line DN.14F-14001038	2100400001B00	1
28		Charger delta-q,48V18A, 120/230VAC	2101100011000	1
29		Charging plug Y-3, AC220V,	2100601019000	1
30		Charger input cable 14AWG*3C 5M	2100401022000	1
30-1		Charger input cable 14AWG*3C 5M	2100401010000	1
30-2		Charger input cable 14AWG*3C 5M	2100401011000	1
30-3		Charger input cable 14AWG*3C 5M	2100401008000	1
30-4		Charger input cable VDE,H05VV-F,1.5MM2*3C, L=5M,BS, BP	2100401009000	1
31	2DC808	Instrument switch fixing plate DG.C2.8-02000100 t2.0/	2207301170A30	1
31-1		Cross recessed pan head tapping screws GB/T845 ST2.9*16, A2-70	2200500198000	4

## 22 Controller and Installing Accessories



Item No.	STAR EV Part No.	Description	MPN	Qty
3		Controllers and installing accessories DG-C2-8A,1232SE	2905467003000	1
3-1		Controller assembly	2901500107000	1
3-1-1	2CN700	AC Controller, 48V350A	2101701024000	1
3-1-2	2SO480	Main contactor, ZJW200A/48V	2102300047A00	1
3-1-3	2FU174	Fuse Holder RQD-148V800A	1131550107000	1
3-1-4	2FU190	Main Fuse CNN-300A DC48V	1128100120000	1
3-1-5	2FU121	Fuse holder RT14-20	2303400009000	1
3-1-6	2FU150	Control Fuse RT14-20/10A	2102601003000	1
3-2		M8 x 16 Hexagon headed bolt: GB/T5783 M8*16	2200100089000	4
3-3		Spring Washer GB/T93,8mm	1205002014000	4
3-4		M8 Flat Washers GB/T97.2 8	2200700023000	1
3-5	2CN916	COVER - 320 x 214x 145mm for controller	2304401700C10	1
3-6		M5 x 15 Cross recessed pan head screw GB818-85 M5*15	1205211014000	4



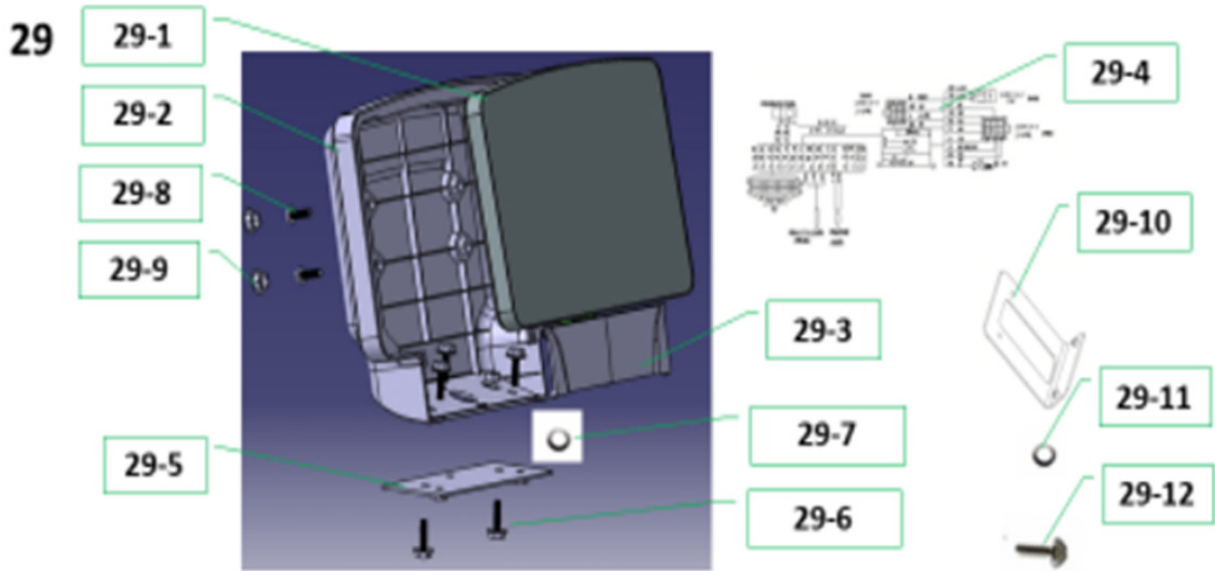
## 23 Lighting Parts



Item No.	STAR EV Part No.	Description	MPN	Qty
1	2WH979	Lighting harness DH.C4.8-14000007	2901704136A00	1
2	2SW390	Combination Switch 600mm, 63-8P	2101400026000	1
3		Cross recessed pan head tapping screws GB/T845 ST5.5*16	2200500024000	2
4		Flat Washers GB/T96.2 6	2200700019000	2
5	2LT746	Headlight-Passenger Side Assembly DG.C2.8-14000010 (A/1) 12V EMARK DOT	2100700259010	1
6	2LT745	Headlight-Driver Side Assembly DG.C2.8 14000011A/112V EMARK DOT	2100700258010	1
6-1		Hex bolts GB/T5783, M6*15	2200102246000	4
6-2		M6 Large Washer GB/T96, M6 (18*6.4*1.6)	2200704005000	4
6-3		M6 Clip Nut	2200406019000	4
6-4		Cross recessed pan head tapping screws GB/T845 ST4.8*25, A2-70	2200500233000	2
6-5		large flat washer GB/T96, M5 (15*5.3*1,A200)	2301908145000	2
7	2LT760	Tail light assembly, JUTE1513-T, DC12V/2.49 E4 50R-0024223	2100700217000	2
8		Cross recessed pan head screws GB/T823 M4*20	2200304006000	4
9		Flat Washers GB/T96,4	2200700006000	4
10		Non-Metallic Insert Hex Lock Nuts GB/T889.1 M4 A2-70	2200401014000	4
11	2CV155	DC Converter DC48V-DC12V/300W, DJ7041-6.3-10	2101800001000	1
12		M5 x 15 Cross recessed pan head screw GB818-85 M5*15	1205211014000	4
13		M5 Hexagon lock nut with non-metallic insert GB/T889.1 M5 A2-70	2200401002000	4
14		M5 Flat washer GB/T97.1 5	2200700010000	4
15	2SW210	Electric horn DC12V3A,105dB, EMARK	2101600001000	1
16	2RL060	Flasher DC12V / 130W,90±30	2101603003000	1
17		M5*20 External hexagon rear end self drilling screw	2200307005000	1
18	2SW611	Brake light switch assembly DN.8-14001020	2902100004B00	1
18-1		Brake light switch 1mm DC12V10A	2101400002000	1

18-2		Chip terminal MX35725-1810,6.3 (14-18#)	1205502010000	1
18-3		Terminal housing MX35955-0210,6.3-2P 66	1306414003000	1

## 24 10" Display Assembly



Item No.	STAR EV Part No.	Description	MPN	Qty
29	N/A	Capella 10 inch display assembly DG-C2-8G,10	2103014663	1
29-1	2MT297	Capella 10 inch display 48v CAN	3207015501	1
29-2	2MT299	Display cover body DG.C2.8G-17000010,S7, ABS	3401010386	1
29-3	2MT300	Display cover DG.C2.8G-17000011,S7, ABS	3401010387	1
29-4	2MT301	Connecting cable DG.C2.8G-14000010, S1	3205026662	1
29-5	2MT302	Display mounting plate DG.C2.8G-17000012, S1, GB/T708 2.0T	3304017748	1
29-6	2HD295	Coarse teeth full thread hexagon head bolt GB/T5783-M6×15	2200102246000	5
29-7	2HD296	Large washer GB/T 96.1-6, A2	2200700017000	5
29-8	2HD297	Cross recess pan head screw GB/T 818 - M5×20, A2-70, 300	2200304199000	4
29-9	2MT303	Rubber mat MC12-4.0001-0700, A0, φ10*2mm, ROHS	1304202011A00	4
29-10	2MT304	Display support plate DG.C2.8G-10000110, S0, Q2353mm	3301022504	1
29-11	2HD298	Hex socket flat round head screw GB/T70.2-M6×16,8.8	2200301177000	4
29-12	2HD299	Flat washer GB/T97.1-6	2200700104000	4